

OREGON CORNER RESTORATION FORM

SECTION 34,35 TOWNSHIP 4 NORTH RANGE 29 EAST X-17
 COUNTY : UMATILLA DATE 11/01

CORNER DESIGNATION

1/4 CORNER

CONDITION REPORT ONLY

NOT FOUND

RENEWED

UNCOVERED

SURVEYED IN

REFERENCED

PREVIOUS RENEWALS / SURVEYS, ETC.

ORIGINALLY SURVEYED IN 1861 BY DAVENPORT UNDER CONTRACT #101. HE SET A POST IN A MOUND OF EARTH AND A CHARRED STAKE.
 IN 1998 EDWARDS SET A 1" x 30" IRON PIPE WITH A 2 3/8" BRASS CAP BY SINGLE PROPORTION.

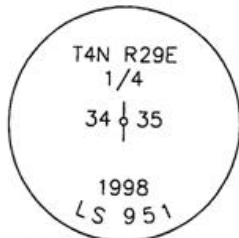
MONUMENTS AND ACCESSORIES FOUND: CONDITION AND SOURCE

AN ALUMINUM TAG #951 IN A POWER POLE LIES N 0°14'18" E, 161.94 FEET.

AN ALUMINUM TAG #951 ON A R x R TIE LIES S 20°31'27" E, 27.30 FEET.

A 5/8" x 30" IRON ROD WITH A YELLOW PLASTIC CAP MKD "#951" LIES S 21°59'52" E, 28.37 FEET.

MONUMENT DETAIL

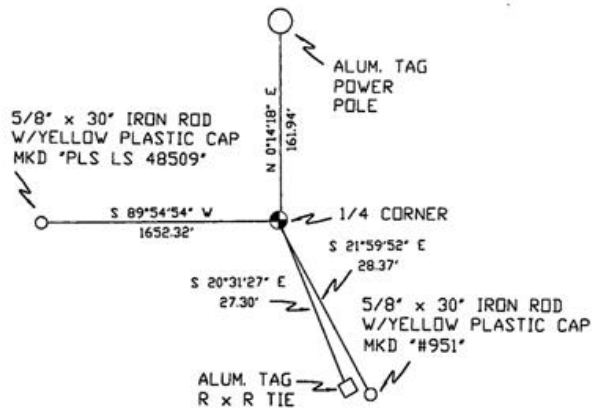


NAD 83/91
 OREGON STATE PLANE
 INTERNATIONAL FEET

774954.7559
 8542995.1827



SKETCH



MONUMENT SET (PROCEDURES AND DESCRIPTION)

NEW ACCESSORIES FROM WHICH

A 5/8" x 30" IRON ROD WITH A YELLOW PLASTIC CAP MKD "PLS LS 48509" LIES S 89°54'54" W, 1652.32 FEET.

LOCATION AND COMMENTS

COMPASS DEC.

SURVEYOR'S SEAL

FIRM/AGENCY
 PRIMM LAND SURVEYING
 P.O. BOX 1322
 HERMISTON, OREGON 97838

REGISTERED
 PROFESSIONAL
 LAND SURVEYOR

PARTY CHIEF
 KEITH P. PRIMM

Brit L. Primm

NOTES

RECEIVED BY

OREGON
 JULY 13, 1999
 BRIT L. PRIMM
 48509

WITNESS Date 12-01
 BRIT L. PRIMM

Umatilla County Surveyor

EXPIRATION DATE: 12/31/02

Signed By *KK*
 No. 01-213-9