

OREGON CORNER RESTORATION FORM

SECTION 23 TOWNSHIP 4 NORTH RANGE 29 EAST R-21

COUNTY : UMATILLA DATE 11-2001

CORNER DESIGNATION

SE CORNER

- CONDITION REPORT ONLY
- NOT FOUND
- RENEWED
- UNCOVERED
- SURVEYED IN
- REFERENCED

PREVIOUS RENEWALS / SURVEYS, ETC.

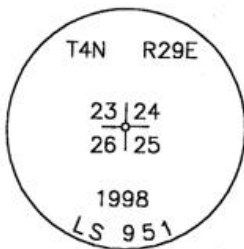
ORIGINALLY SURVEYED IN 1861 BY DAVENPORT UNDER CONTRACT #101. HE SET A POST IN A MOUND OF EARTH AND A CHARRED STAKE.
 IN 1998 EDWARDS SET A 5/8"X30" IRON REBAR WITH A 2" ALUMINUM CAP BY DOUBLE PROPORTION.

MONUMENTS AND ACCESSORIES FOUND: CONDITION AND SOURCE

FOUND A 2" ALUMINUM CAP FLUSH WITH THE SURFACE OF A PAVED ROAD.
 FROM WHICH:

- A 5/8" IRON REBAR WITH PLASTIC CAP #951 BEARS N 77°57'38" W 71.42 FEET.
- AN ALUMINUM TAG #951 ON A POWER POLE BEARS S 57°41'00" W 58.66 FEET.
- AN ALUMINUM TAG #951 ON A POWER POLE BEARS S 2°00'30" W 48.92 FEET.
- AN ALUMINUM TAG #951 ON A POWER POLE BEARS N 9°18'02" W 20.93 FEET.

MONUMENT DETAIL



NAD 83/91
 OREGON STATE PLANE
 INTERNATIONAL FEET
 782988.0063
 8548173.5685

MONUMENT SET (PROCEDURES AND DESCRIPTION)

NEW ACCESSORIES FROM WHICH

LOCATION AND COMMENTS
 FROM THE INTERSECTION OF LOOP ROAD WITH FEEDVILLE ROAD, GO EAST ON FEEDVILLE ROAD 1/2 MILE.

COMPASS DEC.

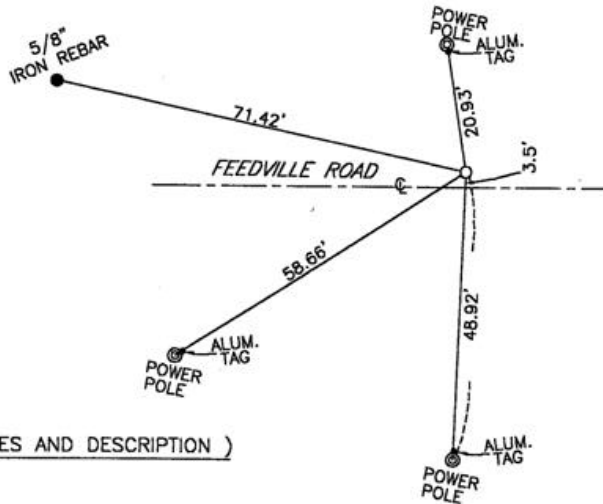
FIRM/AGENCY
 EDWARDS SURVEYING
 P.O. BOX 763
 HERMISTON, OREGON 97838

PARTY CHIEF
 D. EDWARDS

NOTES

WITNESS
 CURTIS J FAVOREL

SKETCH



RECEIVED BY

Umatilla County Surveyor

Date 12-01

Rec'd By KR

No. 01-213-9

SURVEYOR'S SEAL

REGISTERED
 PROFESSIONAL
 LAND SURVEYOR

G. Dennis Edwards

OREGON
 JULY 16, 1971
 G. DENNIS EDWARDS
 9 5 1

RENEWS 12/31/2001