

OREGON CORNER RESTORATION FORM

SECTION 18.19 TOWNSHIP 4 NORTH RANGE 29 EAST
 COUNTY : UMATILLA DATE MAY/20

N-3

CORNER DESIGNATION

1/4 CORNER

CONDITION REPORT ONLY
 NOT FOUND
 RENEWED
 UNCOVERED
 SURVEYED IN
 REFERENCED

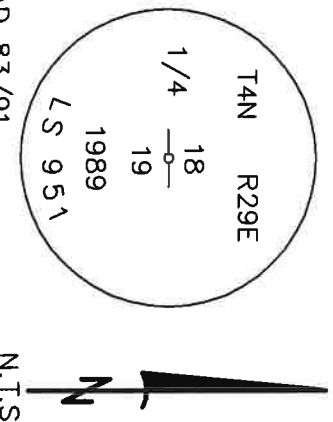
PREVIOUS RENEWALS / SURVEYS, ETC.

ORIGINALLY SURVEYED IN 1861 BY DAVENPORT UNDER CONTRACT #101. HE SET A POST IN A MOUND OF EARTH AND A CHARRED STAKE.
 IN 1989 EDWARDS SET A 2 3/8" BC STAMPED AS BELOW.

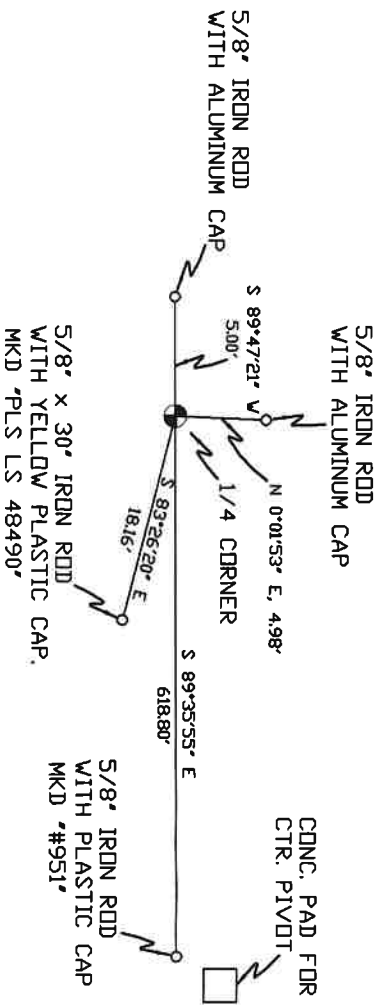
MONUMENTS AND ACCESSORIES FOUND: CONDITION AND SOURCE

- A 5/8" IRON ROD WITH A ALUMINUM CAP LIES S 89°47'21" W, 5.00 FEET.
- A 5/8" IRON ROD WITH A ALUMINUM CAP LIES N 0°01'53" E, 4.98 FEET.
- A 5/8" IRON ROD WITH A PLASTIC CAP "#951" LIES S 89°35'55" E, 618.90 FEET.
- A 2 3/8" BC STAMPED AS BELOW.

MONUMENT DETAIL



SKETCH



NAD 83/91
 OREGON STATE PLANE
 INTERNATIONAL FEET
 787694.30
 8524323.50

MONUMENT SET (PROCEDURES AND DESCRIPTION)

NEW ACCESSORIES FROM WHICH

A 5/8" x 30" IRON ROD WITH A YELLOW PLASTIC CAP MKD "PLS LS 48490" LIES S 83°26'20" E, 18.16 FEET.

LOCATION AND COMMENTS

FROM INTERSECTION OF FEEDVILLE RD. AND CANAL RD. GO NORTH ON CANAL RD. 1 MILE THEN WEST 0.5 MILES TO CORNER.

COMPASS DEC.

SURVEYOR'S SEAL

FIRM/AGENCY

PRIMM LAND SURVEYING
 P.O. BOX 1322
 HERMISTON, OREGON 97838

REGISTERED
 PROFESSIONAL
 LAND SURVEYOR

PARTY CHIEF
 BRIT L. PRIMM

OREGON
 JULY 12, 2005
 KEITH P. PRIMM
 48490

NOTES

WITNESS
 KEITH P. PRIMM

EXPIRATION DATE: 12/31/20

21-004-C

Φ1 DEC 20