

OREGON CORNER RESTORATION FORM

SECTION 7,12 TOWNSHIP 4 NORTH RANGE 28,29 EAST
 COUNTY : UMATILLA DATE MAY/20

G-1

CORNER DESIGNATION

1/4 CORNER

- CONDITION REPORT ONLY
- NOT FOUND
- RENEWED
- UNCOVERED
- SURVEYED IN
- REFERENCED

PREVIOUS RENEWALS / SURVEYS, ETC.

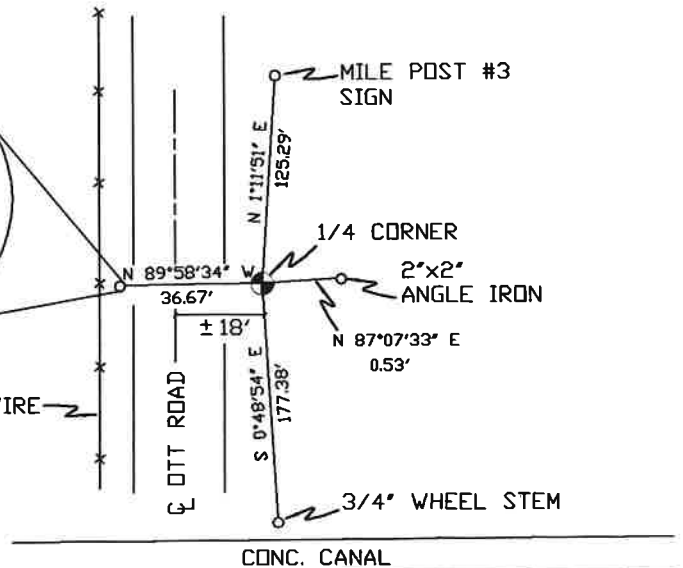
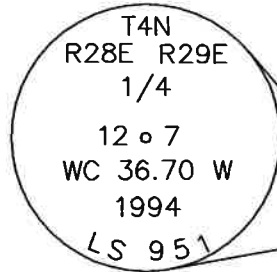
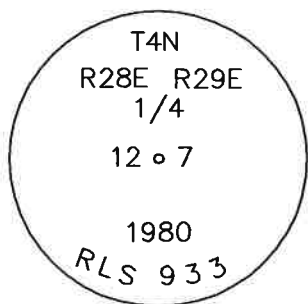
ORIGINALLY SURVEYED IN 1860 BY CAMPBELL UNDER CONTRACT #95. HE SET A POST IN A MOUND OF EARTH.
 IN 1980 KRUMBEIN SET A 2 3/8" BC STAMPED AS BELOW SEE SURVEY S-156-C.

MONUMENTS AND ACCESSORIES FOUND: CONDITION AND SOURCE

- A 2 3/8" BC STAMPED AS BELOW LIES N 89°58'34" W, 36.67 FEET.
- MILE POST #3 SIGN LIES N 1°11'51" E, 125.29 FEET.
- A 2" X 2" ANGLE IRON LIES N 87°07'33" E, 0.53 FEET.
- A 3/4" WHEEL STEM FOR HEADGATE LIES S 0°48'54" E, 177.38 FEET.
- A 2 3/8" BC STAMPED AS BELOW.

MONUMENT DETAIL

SKETCH



NAD 83/91
 OREGON STATE PLANE
 INTERNATIONAL FEET

795563.72
 8521027.62

5 STRAND
 BARBED WIRE
 FENCE

CONC. CANAL

MONUMENT SET (PROCEDURES AND DESCRIPTION)

NEW ACCESSORIES FROM WHICH

LOCATION AND COMMENTS

FROM INTERSECTION OF
 HOOKER (ELM) AND OTT RD.
 GO SOUTH 1/2 MILE TO CORNER.

COMPASS DEC.

FIRM/AGENCY
 PRIMM LAND SURVEYING
 P.O. BOX 1322
 HERMISTON, OREGON 97838

PARTY CHIEF
 BRIT L. PRIMM

NOTES

WITNESS
 KEITH P. PRIMM

SURVEYOR'S SEAL

REGISTERED
 PROFESSIONAL
 LAND SURVEYOR

Keith P. Primm
 OREGON
 JULY 12, 2005
 KEITH P. PRIMM
 48490

EXPIRATION DATE: 12/31/20

IMA

21-004-C

01 DEC 20