

OREGON CORNER RESTORATION FORM

SECTION 6 TOWNSHIP 4 N RANGE 28 E CORNER LOCATION CODE A-1

COUNTY: UMATILLA DATE: March 1994

CORNER DESIGNATION

NW CORNER OF SECTION 6, T4N, R28E, W.M.

- CONDITION REPORT ONLY
 NOT FOUND
 RENEWED
 UNRECORDED
 SURVEYED IN
 REFERENCED OUT

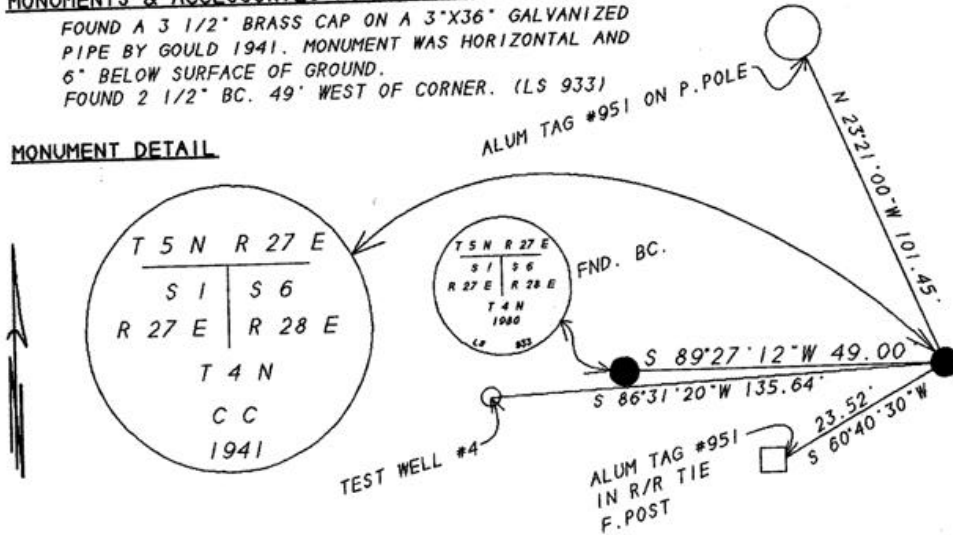
PREVIOUS RENEWALS/SURVEYS, ETC.

ORIGINAL SURVEY BY HAFT IN 1860. CONTRACT NO. 93.
 DEPENDENT RESURVEY BY GOULD IN 1941.
 KRUMBIEN SURVEY FOR UMATILLA COUNTY IN 1980.

MONUMENTS & ACCESSORIES FOUND: Condition and Source

FOUND A 3 1/2" BRASS CAP ON A 3"X36" GALVANIZED PIPE BY GOULD 1941. MONUMENT WAS HORIZONTAL AND 6" BELOW SURFACE OF GROUND.
 FOUND 2 1/2" BC. 49' WEST OF CORNER. (LS 933)

MONUMENT DETAIL



MONUMENT SET (Procedures and Description)

RESET FOUND GOULD MONUMENT 3" HIGH AT THE LOCATION OF THE BOTTOM END OF MONUMENT. THE BRASS CAP COULD THEN BE READ FROM THE SOUTH AND FIELD TIES VERIFIED THAT ITS LOCATION AGAIN MATCHED GOULD'S SURVEY.
 SEE MY SURVEY # 94-022-C.

NEW ACCESSORIES

KRUMBEIN 2 1/2" BRASS CAP (1980) BEARS S 89°27'12"W 49.00 FEET.
 AN ALUM TAG #951 ON P. POLE BEARS N 23°21'00"W 101.45 FEET
 AN ALUM TAG #951 ON A R/R TIE F. POSE BEARS S 60°40'30"W 23.52 FEET.
 A TEST WELL CASING #4 BEARS S 86°51'20"W 135.64 FEET.

LOCATION & COMMENTS

FROM WESTERLY END OF BRIDGE ROAD CROSS I-82 TO FRONTAGE ROAD AND FOLLOW FRONTAGE ROAD NORTH-EASTERLY TO THE RANGE LINE. THEN GO NORTH ALONG GRAVEL ROAD 1.35 MILES TO THE SECTION CORNER.

COMPASS DEC _____
 FIRM EDWARDS SURVEYING
 P.O. BOX 763
 HERMISTON, OR. 97838
 PARTY CHIEF D. EDWARDS
 NOTES J. COPPOCK
 WITNESS J. COPPOCK

SURVEYOR'S SEAL

REGISTERED
 PROFESSIONAL
 LAND SURVEYOR

G. Dennis Edwards

OREGON
 JULY 16, 1971
 G. DENNIS EDWARDS
 951

RENEWS 12/31/95

RECEIVED BY
 Umatilla County Surveyor
 Date 1-96
 Rec'd By KE
 No. 96-12-R