

CERTIFIED RECORD OF LAND CORNER MONUMENTATION

HISTORY OF ORIGINAL CORNER ESTABLISHED:

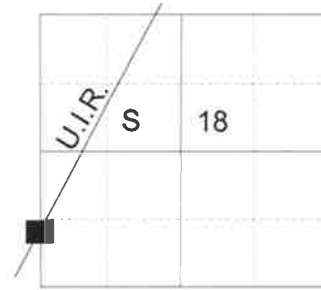
Original corner set by L.E. Wilkes under GLO special instructions dated February 20, 1917, included under Group No. 29. Field notes state:

Set an iron post, 3 ft. long, 2 ins. diam., 24 ins. in the ground, for the closing cor. of secs. 13 and 18, with brass cap marked, from which:

A fir, 22 ins. diam., bears S.59°15'E., 77 lks. dist., marked CC T2S R35E S18 BT.

A fir, 16 ins. diam., bears S.48°30'W., 64 lks. dist., marked CC T2S R34E S13 BT.

T 2 S R 35 E M/N-01



DESCRIPTION OF CORNER EVIDENCE FOUND:

Found 2 1/2" iron pipe with 2 1/2" GLO Brass Cap marked as shown below, protruding 14" above ground, in a collar of stone 2 ft. diam. No bearing trees found. Cap is improperly stamped "S24" instead of "S18".

SEE SURVEY FOR HANCOCK FOREST MANAGEMENT DATED OCTOBER 2017

DESCRIPTION OF MONUMENT AND ACCESSORIES I ESTABLISHED

TO PERPETUATE THE ORIGINAL LOCATION OF THIS CORNER:

From the iron pipe monument,

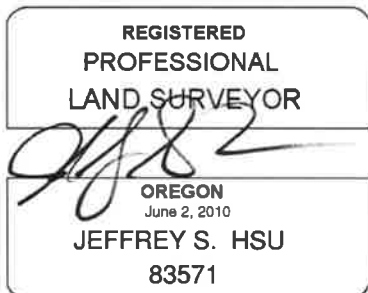
NEW BEARING TREES:

A 13" Douglas Fir bears South 62° East, a distance of 7.15 feet, marked CC T2S R35E S18 BT.
A 13" Ponderosa Pine bears South 72° West, a distance of 29.00 feet, marked CC T2S R34E S13 BT.

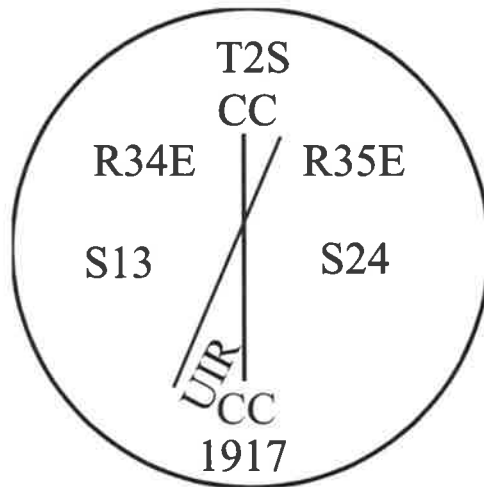
Corner falls approx. 30 ft. West of a fenceline.

I hereby certify that the corner was perpetuated October 26, 2017.

Witness: Kyle Tucker



Renewal Date: June 30, 2019



I used a steel tape and magnetic compass in the establishment of the bearing trees. Magnetic declination used was 13° East. Bearing is to a brass washer marked OPLS 83571 in the lower blaze of the tree. Distance is to a spike set in the root crown of the side of the tree.

M/N-01

17-122-8