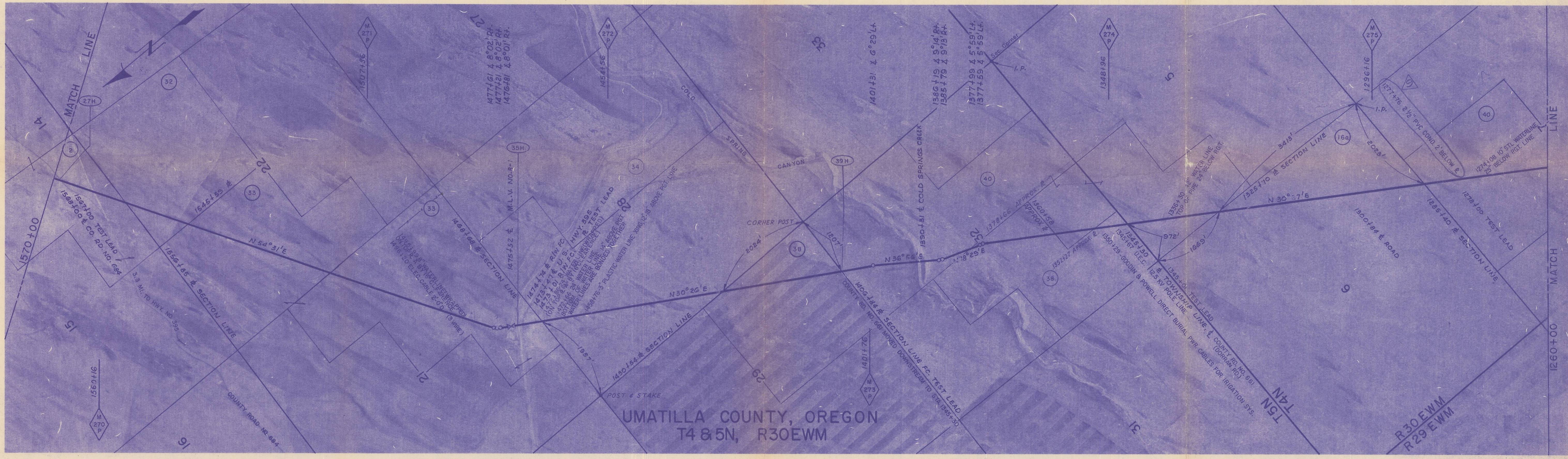


ALIGNMENT DETAILS	% IN PLANT											37.7%											21.8%
	% IN FIELD																						
	TEST PRESSURE	MAXIMUM-1245 P.S.I.G. MINIMUM-1010 P.S.I.G.											MAXIMUM-1245 P.S.I.G. MINIMUM-1086 P.S.I.G.										
	COVER-3' (U.O.N.)											4 FT.											
	R/W NO.	O-UM-2	O-UM-27H	O-UM-2	O-UM-32	O-UM-33	O-UM-35H	O-UM-33	O-UM-34	O-UM-38	O-UM-39H	O-UM-40	O-UM-38	O-UM-40	O-UM-38	O-UM-40	O-UM-16a	O-UM-40					
	OWNERSHIP	Laverne Pearson	County Road No. 684	Philip D. Mann Estate	Pete Kosmos, et al	U.S. Hwy. No. 395	Pete Kosmos, et al	Pete Kosmos, et al	R.L. Brock & Doris Brock	(Previously) County Road No. 661	Pete Kosmos, et al	R.L. Brock & Doris Brock	Pete Kosmos, et al	Pete Kosmos, et al	Pete Kosmos, et al	Powell - Goodin Farms	Pete Kosmos, et al						
	ACRES			2.58		17.26		8.75	5.44	6.47		5.75			4.50	9.25	15.27						
	FIELDBOOK NO.																						
	PAGE NO.																						
	R/W DETAILS																						
	TERRAIN	GRASS	WHEAT	GRASS	WHEAT	GRASS	WHEAT	GRASS	HWY.	WHEAT	ROAD	PASTURE	CREEK	PASTURE									



AS BUILT

SCALE OF DETAIL: 1"=30'



CONSTRUCTION DETAILS	REF. DWGS.	CONST. DWG. NO. 51-D-HX-144, 51-A-P-1000	A-CD-135, A-CD-136	51-E-UX-1000	51-D-HX-175, 51-A-P-1000	51-E-UX-1000	51-D-HX-144	51-A-P-1000	51-D-L-357	51-A-P-1000	51-D-HX-143	51-A-P-1000
	PIPELINE DETAILS	PERMIT DWG. NO. 500-C-HX-154	D-HX-118		D-HX-118		500-C-HX-154					
	PIPE	36" x 0.453" W.T. API 5LX52 (EXCEPT AS NOTED)										
	COATING	ASPHALT PRIMER, 1/8" ASPHALT ENAMEL, GLASS INNER WRAP, FELT OUTER WRAP										

MAINLINE BILL OF MATERIALS (STA 1260+00 TO STA 1570+00)	
0.438" W.T. PIPE	21,191 FT.
0.453" W.T. PIPE	9,420 FT.
0.531" W.T. PIPE	294 FT.
SINGLE CT. & DBLE. WRAP	30,546 FT.
DBLE. CT. & DBLE. WRAP	514 FT.
TEST LEADS, C-1	1 EACH
TEST LEADS, C-2	4 EACH
TYPE C CONSTRUCTION	95 FT (SEE DWG. 460)

NO.	DATE	DESCRIPTION	APPRD.
9	9-22-78	ADDED CONDUIT XING @ 1277+76	
8	9-15-75	ADDED WATER LINE XING @ 1458+76	
7	7-21-75	ADDED BURIAL PWR. CA @ 1350+29	
6	5-1-74	ADDED 24" WATER LINE	

NO.	DATE	DESCRIPTION	APPRD.
5	4-15-74	ADDED WATER LINE XING	
4	3-18-74	ADDED WATER LINE	
3	2-20-74	REVISED AS FLAGGED	
2	12-12-69	REMOVED TEST LEAD	
1	4-4-69	REVISED PER W.O. 4939	
0	5-1-62	AS BUILT, REV. DWG. NUMBERS	ATT

36" PIPELINE
M.P. 269.8 to M.P. 275.7
UMATILLA COUNTY, OREGON

PACIFIC GAS TRANSMISSION COMPANY
 SAN FRANCISCO, CALIF.

BECHTEL CORPORATION
 AGENT
 SAN FRANCISCO CALIF.

BILL OF MATERIAL
 SHEET NO. 48 OF 106 SHEETS
 DRAWING NUMBER CHANGE
B-AL-148 9

Hammon, Jensen & Wallin

Q 40 C

Q-40 C (348)