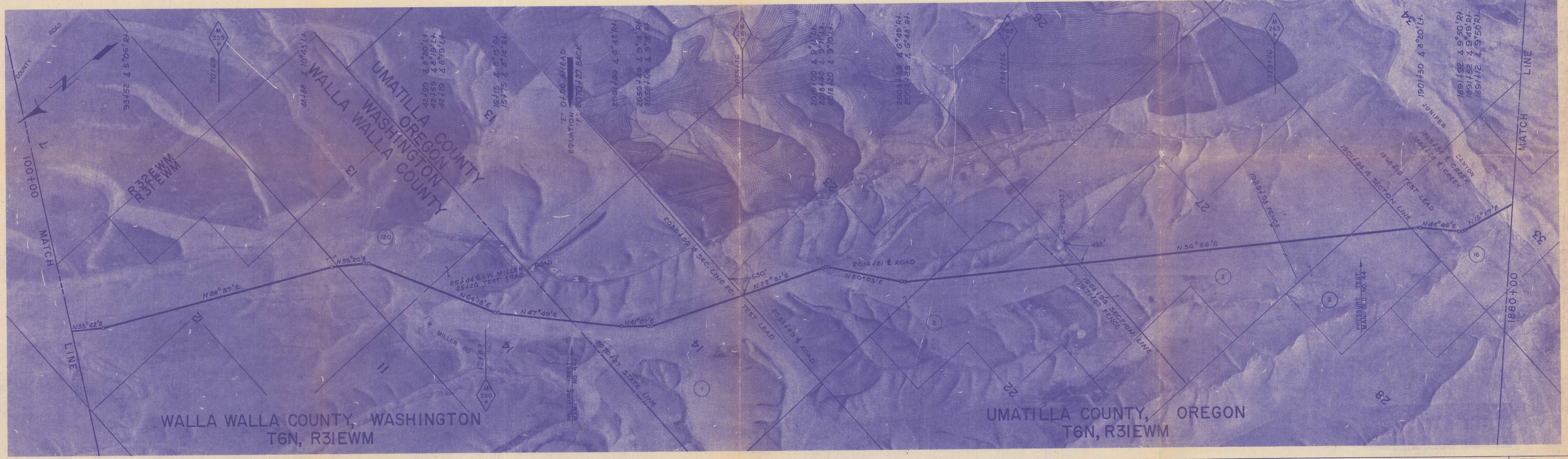


ALIGNMENT DETAILS	% IN PLANT				37.7%			21.8%			MAXIMUM-1245 PS.I.G. MINIMUM-1100 PS.I.G.				
	% IN FIELD	24.6%													
	TEST PRESSURE	MAXIMUM-1216 PS.I.G. MINIMUM-1100 PS.I.G.						MAXIMUM-1282 PS.I.G. MINIMUM-1123 PS.I.G.			MAXIMUM-1245 PS.I.G. MINIMUM-1100 PS.I.G.				
	COVER-3'(U.O.N.)														
	R/W NO.	W-WA-120			O-UM-1			O-UM-2			O-UM-16				
	OWNERSHIP	The Braden Company, a Corporation			The Braden Company, a Washington Corporation			LaVerne E. Pearson & Martha S. Pearson			U.S. of A. B. of L. M.				
	ACRES							30.67			37.19				
	FIELDBOOK NO.	WW-1						UM-4							
	PAGE NO.	3-6						6-13							
	R/W DETAILS	R/W DWG. NO. B-RW-131 (3108)													
TERRAIN SURFACE & VEGETATION	WHEAT			GRASS			WHEAT			PASTURE			JUNIPER CANYON		



AS BUILT

Hammon, Jensen & Wallen
REGISTERED PROFESSIONAL ENGINEERS
WASHINGTON, CALIFORNIA



CONSTRUCTION DETAILS	REF. DWGS.	CONST. DWG. NO. A-CD-106 TYPICAL DWG. NO. A-CD-106 PERMIT DWG. NO. A-CD-106
	PIPELINE DETAILS	C-2
	PIPE	36" x 0.438" WT. API 5LX 52
COATING		ASPHALT PRIMER, 1/8" ASPHALT ENAMEL, GLASS INNER WRAP, FELT OUTER WRAP

MAINLINE	BILL OF MATERIALS	STA. 1880+00 TO STA. 100+00	QTY	UNIT
0.438" W.T. PIPE	22,377 FT.	TEST LEADS, C-2	3	EACH
0.453" W.T. PIPE	6,650 FT.	CASING, 42" O.D. x 0.344" W.T.	0	FT.
0.531" W.T. PIPE	0 FT.	VENT PIPE, 3" SCHED. 40	0	EACH
SINGLE CT. & DBLE. WRAP	29,027 FT.	INSULATORS	0	EACH
DBLE. CT. & DBLE. WRAP	0 FT.	END SEALS	0	EACH

NOTE: ALL BENDS ARE SMOOTH FIELD BENDS EXCEPT WHERE FACTORY BENDS ARE NOTED.

NO.	DATE	DESCRIPTION	APPRD.
0	5-1-62	AS BUILT, REV. DWG. NUMBER	ATT

APPROVED BY	GM
BY DSGN.	
DR. I.D.I.	
CH. F.E.M.	
O.K. ATT	
DATE 7.20.59	
SCALES	
1"=1000' APPROX.	

36" PIPELINE
M.P. 258.4 to M.P. 263.9
WALLA WALLA COUNTY, WASHINGTON
& UMATILLA COUNTY, OREGON.
PACIFIC GAS TRANSMISSION COMPANY
SAN FRANCISCO, CALIF.

BECHTEL CORPORATION
AGENT
SAN FRANCISCO, CALIF.
BILL OF MATERIAL
SHEET NO. 46 OF 106 SHEETS
DRAWING NUMBER CHANGE
B-AL-146 0