

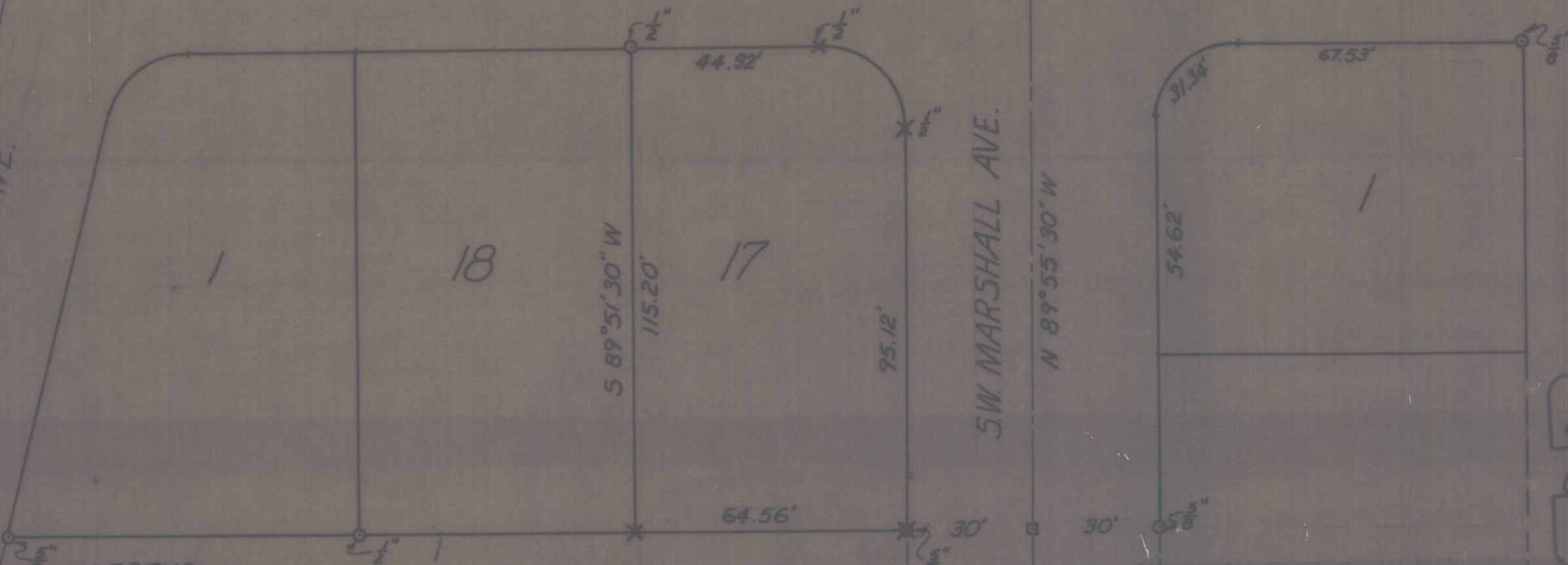
INITIAL POINT

S.W. 33<sup>rd</sup> STREET

N 0° 08' 30" W

S.W. LADOW AVE.

S.W. MARSHALL AVE.



**LEGEND**

- - FND AS INDICATED
- ⊗ - FND AND RESET
- - FND BUT NOT VERIFIED THAT PIN WAS UNDER GROUND
- × - SET AS INDICATED

REGISTERED PROFESSIONAL LAND SURVEYOR

*David H. Kruse*

OREGON  
JULY 17, 1970  
DAVID H. KRUSE  
833

**KRUMBEIN ENGINEERING CO**  
ENGINEERS - SURVEYORS - PLANNERS  
221 S. Main, Pendleton, Oregon

*SURVEY FOR JIM FROST*  
LOT 17, BLOCK 4, PARK VIEW ADDITION

SCALE	1"=30'
DATE	5-25-77
DRN BY	W.J.R.
CKD BY	
DRNG NO.	77-26 B

N-46 A