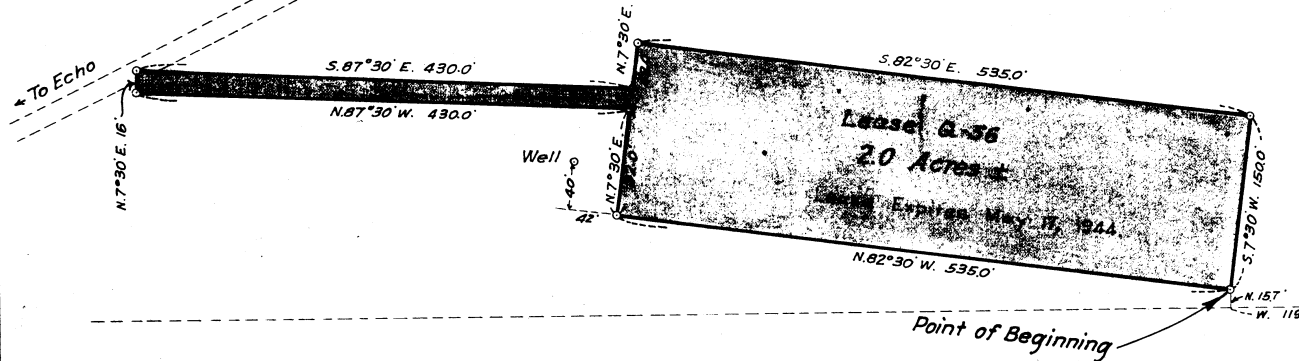


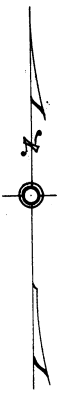
T.3 N., R.29 E. W.M.

James Bottger
N.E. 1/4 of N.W. 1/4 Sec. 15

To Echo
ROAD



Lease G-36
2.0 Acres
Expires May 11, 1944



3N29 Sec. 15
 OREGON STATE HIGHWAY DEPARTMENT
 Property Leased from
JAMES BOTTGER
 for
QUARRY SITE
 NEAR THE
 COLUMBIA RIVER HIGHWAY
 UMATILLA COUNTY
 Scale 1 in = 100 ft. Jan. 1928