

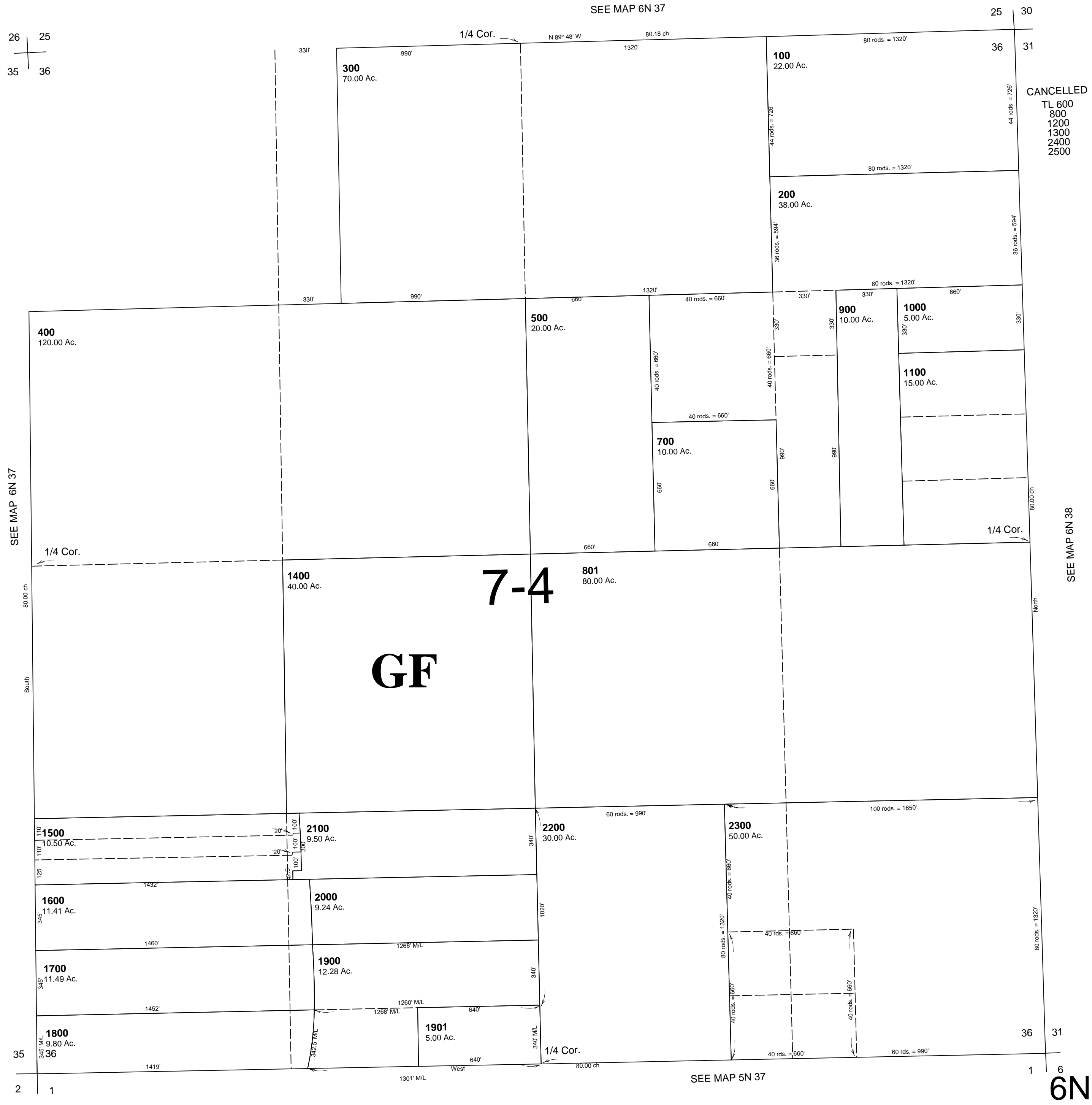
This map was prepared for Assessment & Taxation purposes only and was NOT prepared nor is it suitable for legal, engineering or surveying purposes.

SEC 36 T6N R37E WM UMATILLA COUNTY

5/8/06

6N 37 36
AERIAL PHOTO NO. NZ 6P-73

SCALE 1"=400'



6N 37 36