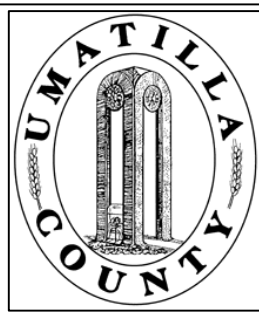


This map was prepared for Assessment purposes only.



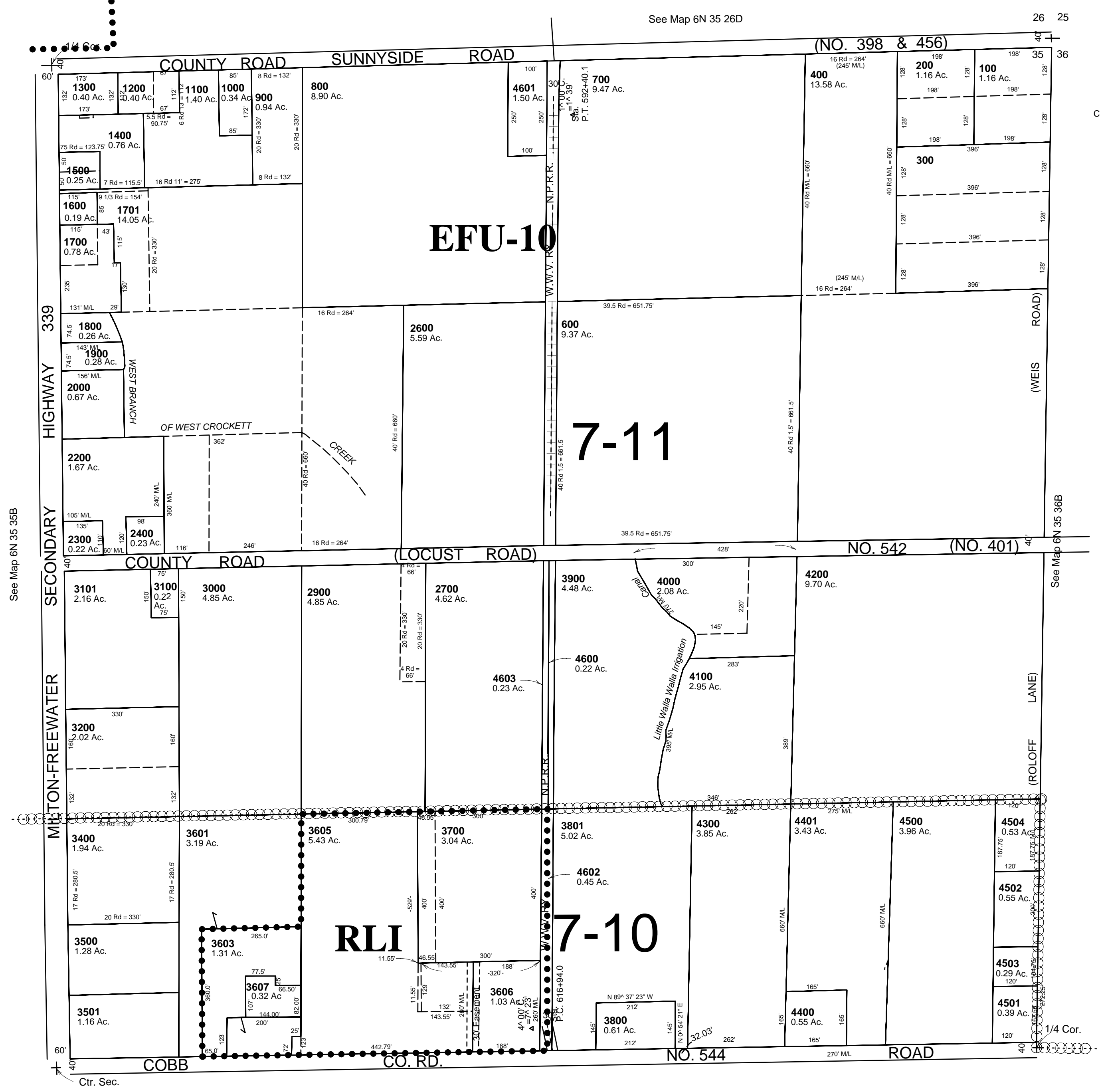
NE1/4 SEC 35 T 6N R 35 E WM  
UMATILLA COUNTY, OR

10/22/03

6N 35 35A

AERIAL PHOTO NO. NZ-6P-63

SCALE: 1" = 200'



- CANCELLED
- TL 4090
  - 500
  - 2100
  - 2401
  - 2402
  - 2500
  - 3602
  - 3604
  - 2800
  - 1490
  - 1201
  - 3300
  - 3600
  - 201

See Map 6N 35 35B

See Map 6N 35 36B

See Map 6N 35 35D

6N 35 35A