

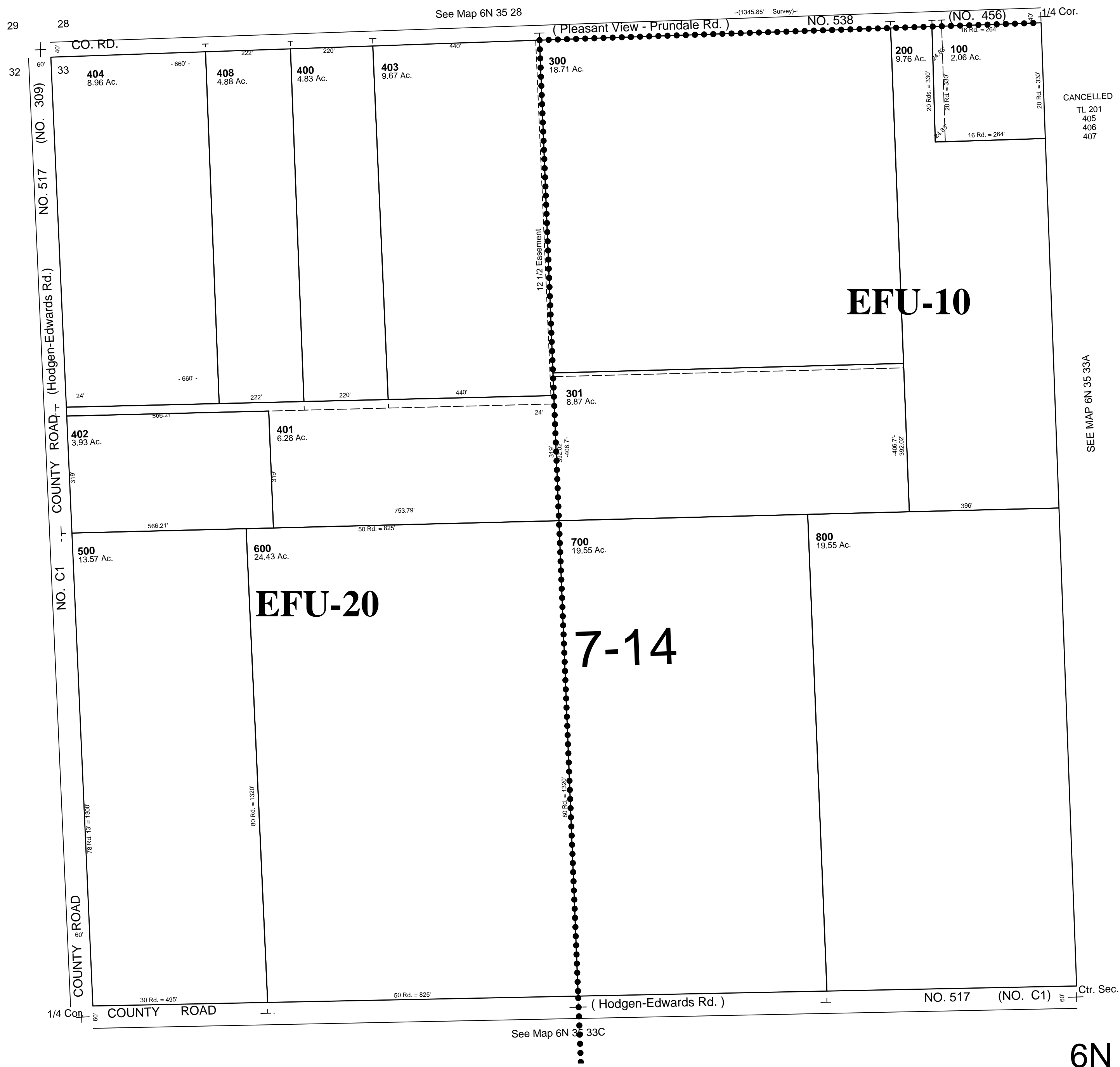
This map was prepared for assessment purposes

NW 1/4 SEC 33 T6N R35E WM UMATILLA COUNTY

10/16/06

6N 35 33B
AERIAL PHOTO NO. 6P-61

SCALE 1"=200'



CANCELLED
TL 201
405
406
407

SEE MAP 6N 35 33A

6N 35 33B