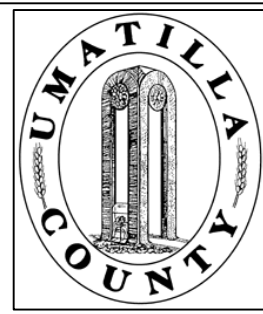


This map was prepared for Assessment purposes only.



NW1/4 SEC 24 T 6N R 35E WM UMATILLA COUNTY, OR

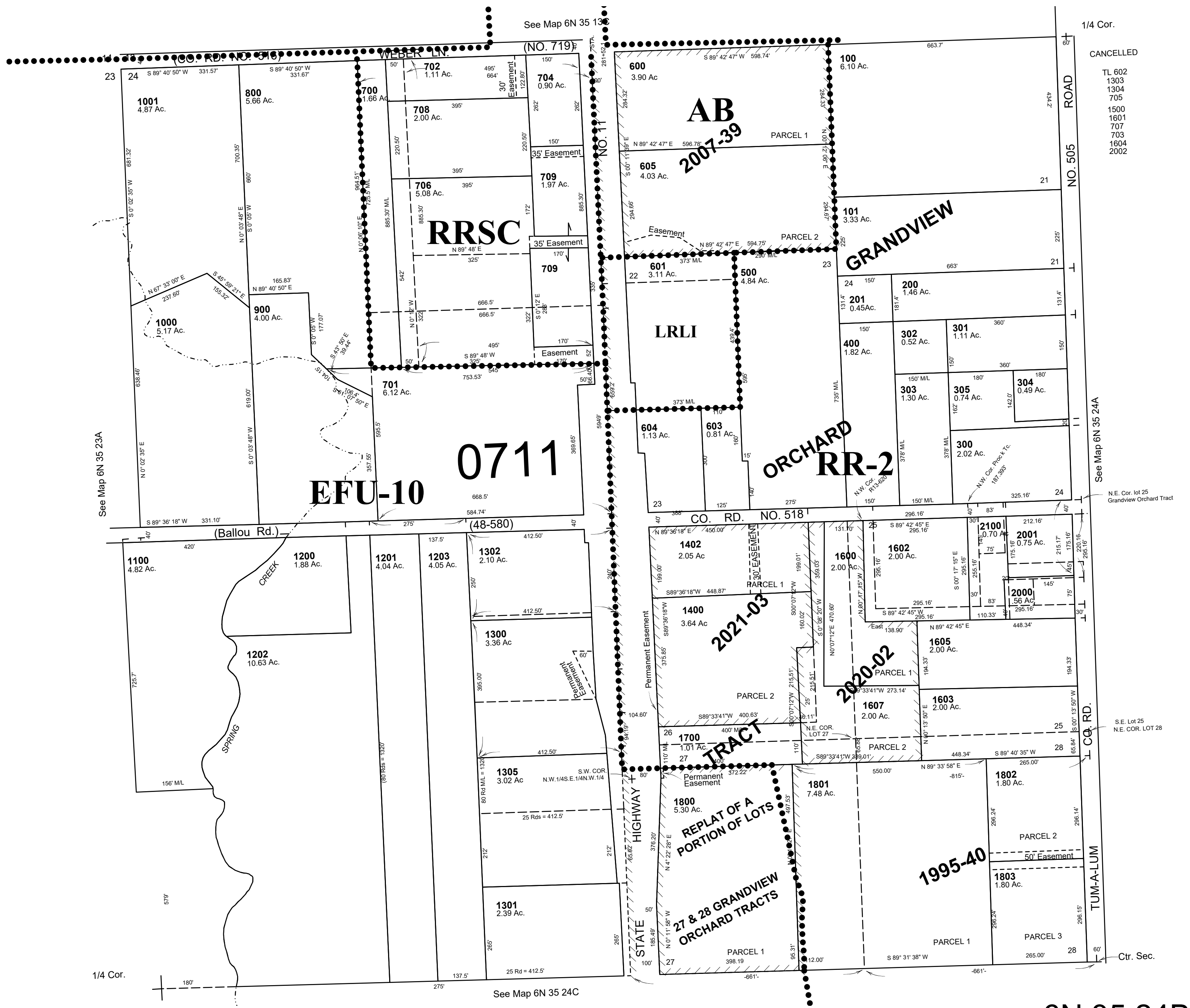
SCALE: 1" = 200'

03/11/21

6N 35 24B

GRANDVIEW ORCHARD TRACT LOTS 21-28

Aerial Photo No. NZ-6P-17



6N 35 24B