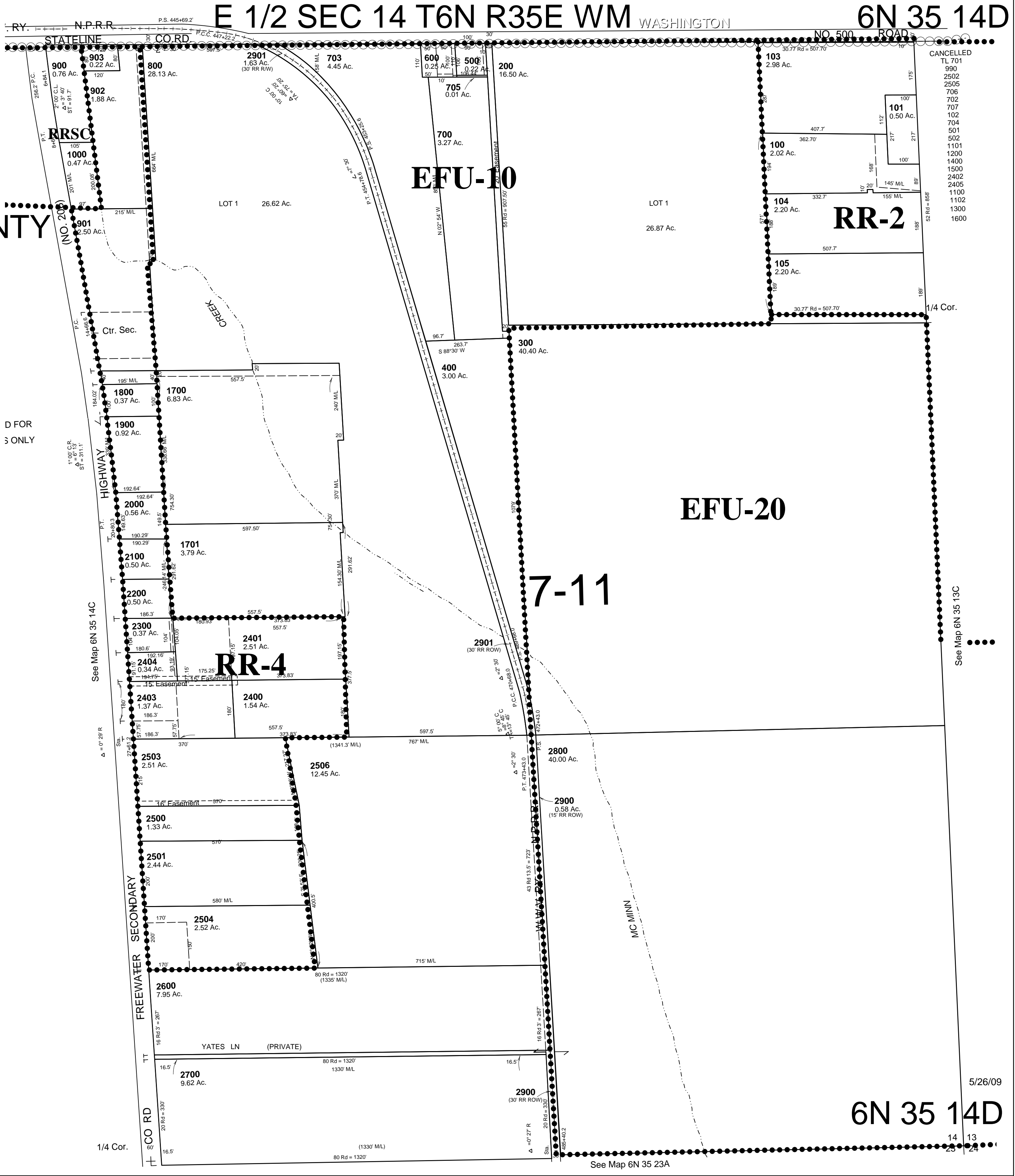


This map was prepared for Assessment & Taxation purposes only and was NOT prepared nor is it suitable for legal, engineering or surveying purposes.



SCALE: 1" = 200'
UMATILLA COUNTY

AERIAL PHOTO NO. NZ-6P-18

D FOR
S ONLY

See Map 6N 35 14C

1/4 Cor.

See Map 6N 35 23A

See Map 6N 35 13C

5/26/09

6N 35 14D

CANCELLED
TL 701
990
2502
2505
706
708
702
707
102
704
501
502
1101
1200
1400
1500
2402
2405
1100
1102
1300
1600