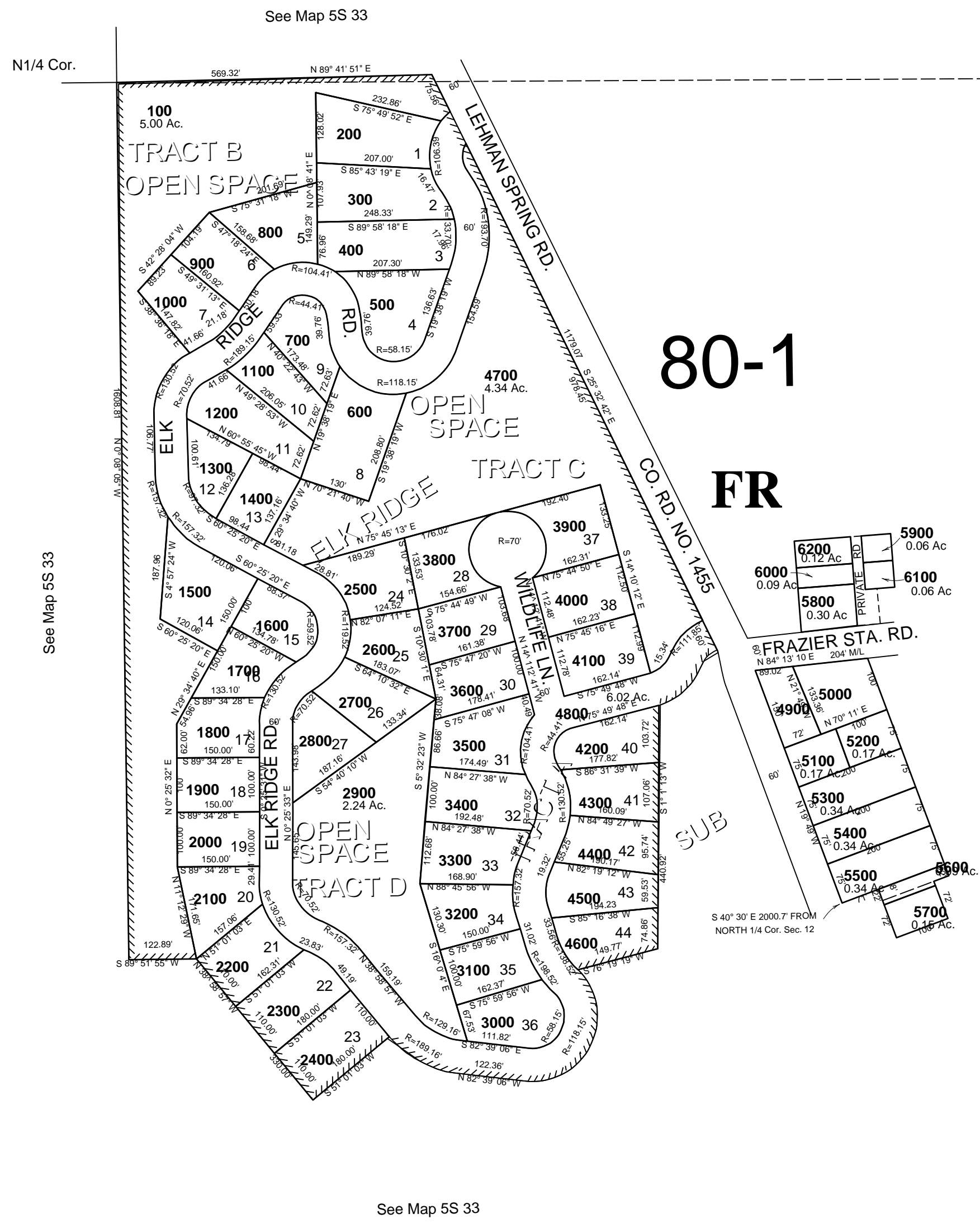


This map was prepared for Assessment and Taxation purposes only and has NOT been prepared for legal, engineering, or surveying purposes.

NE1/4 SEC 12 T5S R33E WM
UMATILLA COUNTY
SCALE 1"=200'

2/26/07

5S 33 12A
LEHMAN HOT SPRINGS AREA



5S 33 12A