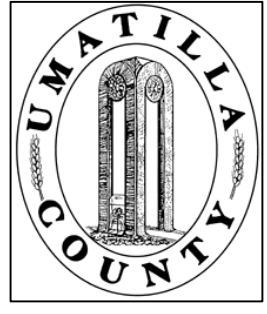


This map was prepared for Assessment and Taxation purposes only and has NOT been prepared for legal, engineering or surveying purposes.



NE 14/ SE 1/4 SEC 12 T 5N R 35E WM  
UMATILLA COUNTY, OR

9/23/03

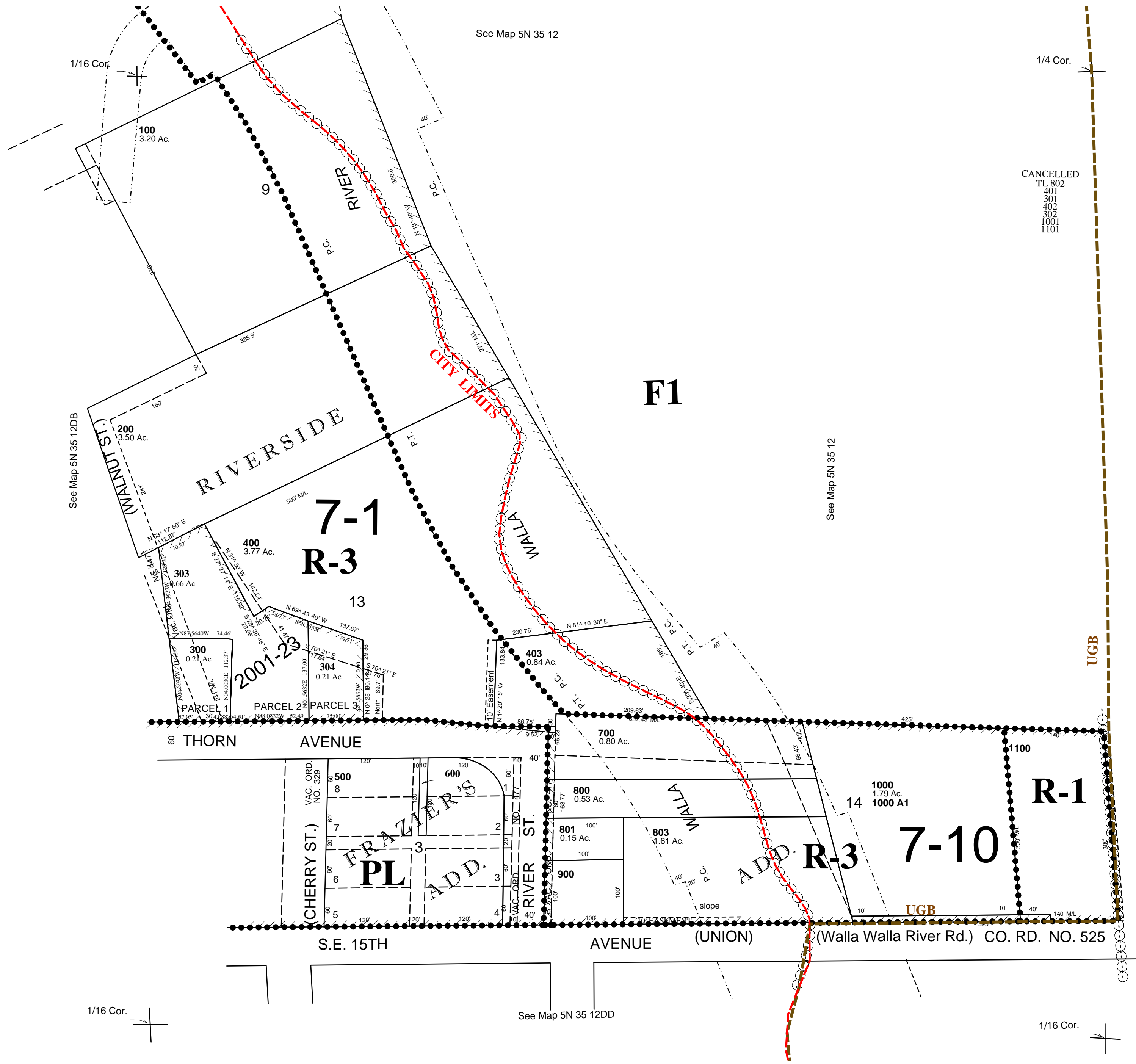
5N3512DA

AERIAL PHOTO NO. 11P-82

Milton-Freewater City & Urban Growth Area

SCALE: 1" = 100'

See FEMA FIRM for areas subject to flood



5N3512DA