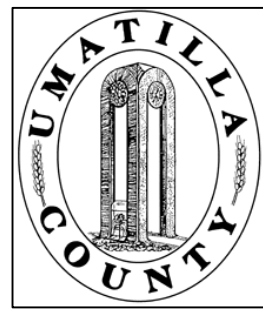


This map was prepared for Assessment & Taxation purposes only and was NOT prepared nor is it suitable for legal, engineering or surveying purposes.



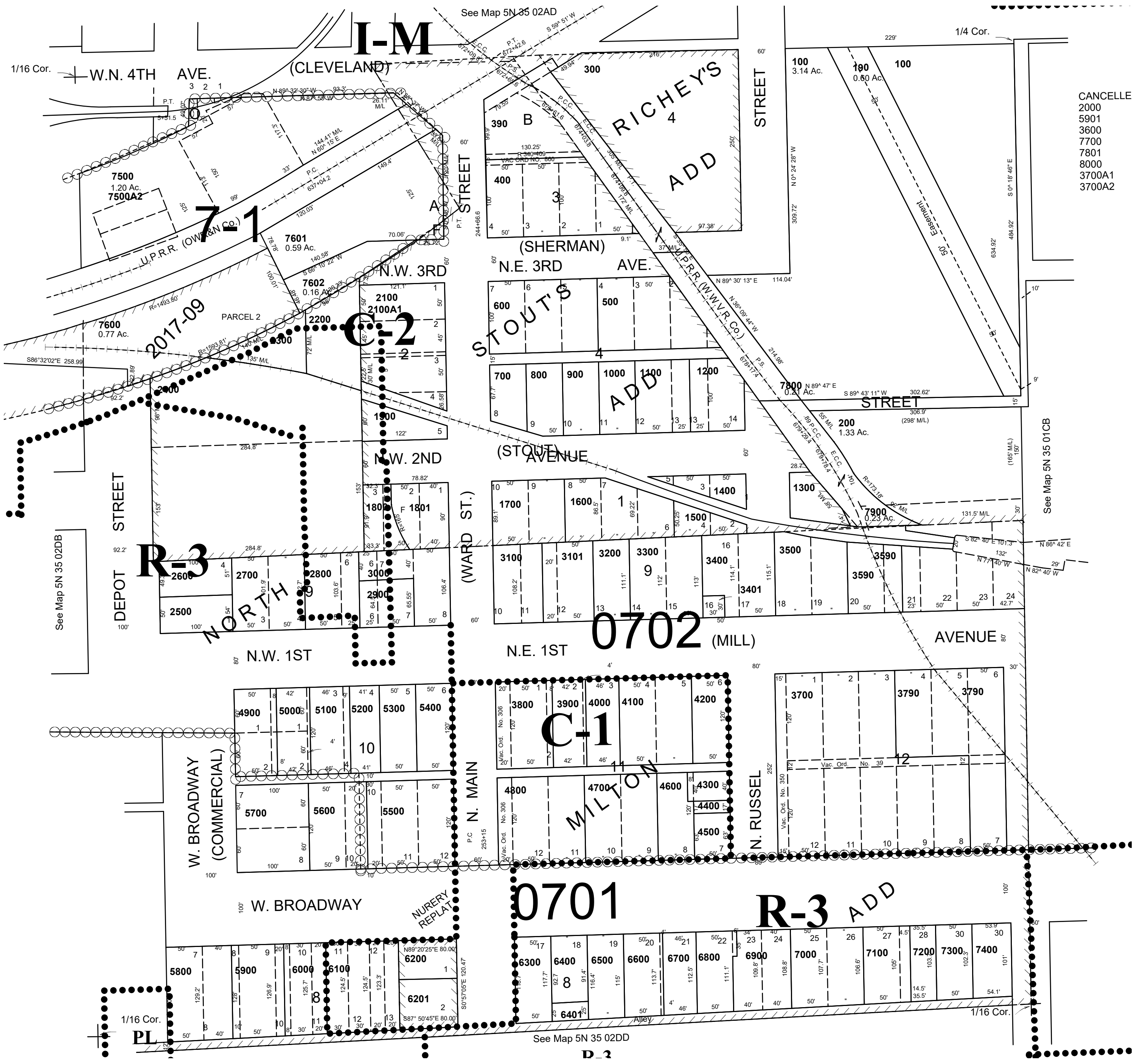
# NE 1/4 SE 1/4 SEC 2 T 5N R 35E WM UMATILLA COUNTY

SCALE: 1" = 100'

## 5N3502DA

AERIAL PHOTO NO. 11P-82

CITY OF MILTON-FREEWATER



CANCELLED  
 2000  
 5901  
 3600  
 7700  
 7801  
 8000  
 3700A1  
 3700A2

Revised: 4-1-20

## 5N3502DA