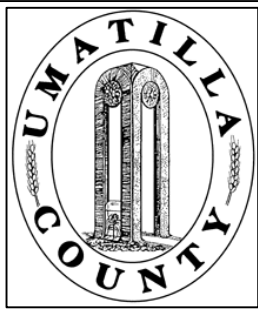


This map was prepared for Assessment purposes only.



# NE 1/4 SEC 26 T 5N R 28 E WM UMATILLA COUNTY, OR

9/24/03

## 5N2826A

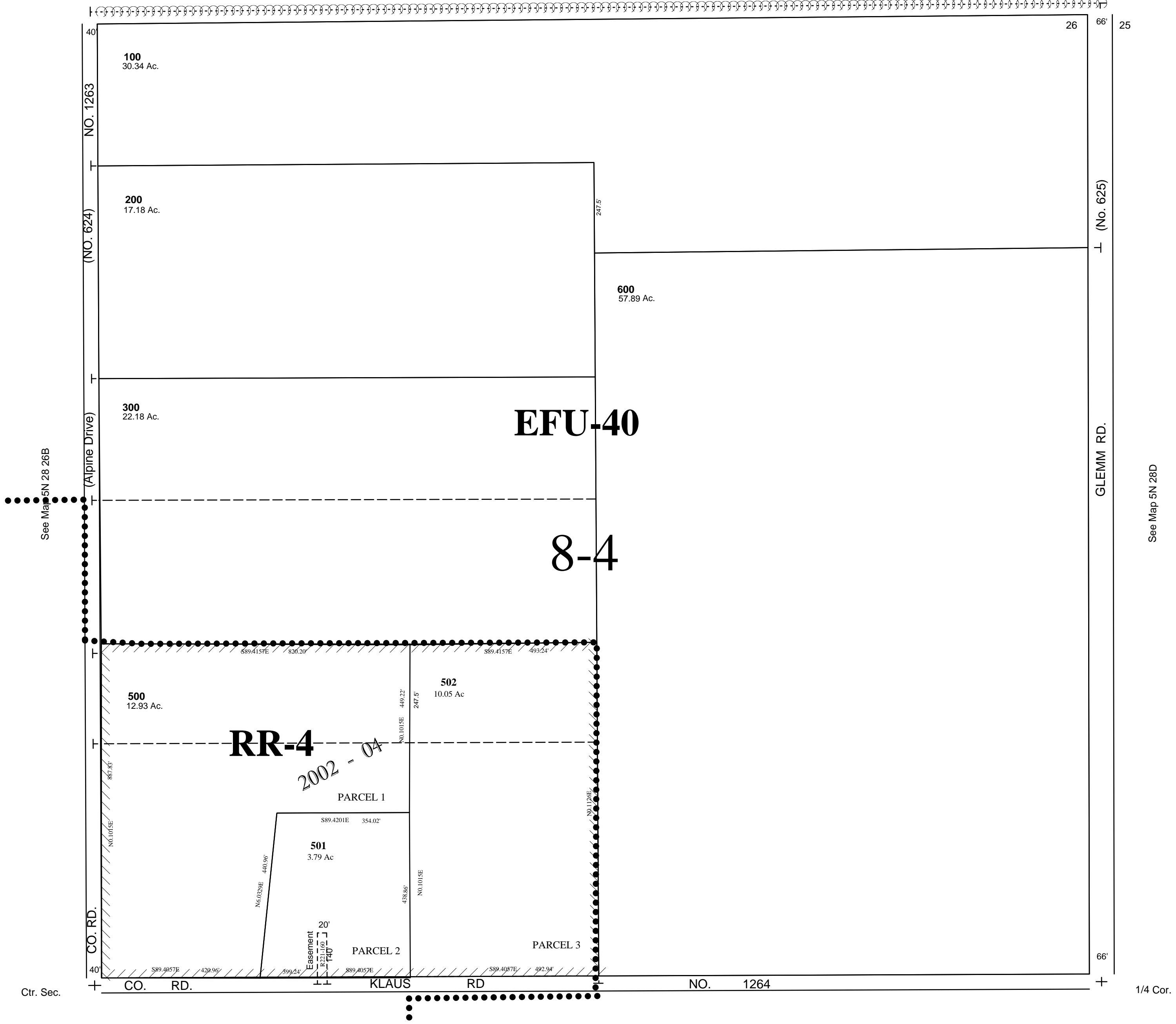
AERIAL PHOTO NO. 1P-103

SCALE: 1"=200'

See Map 5N 28D

1/4 Cor.

23 24



CANCELLED NOS.

400

See Map 5N 28D

## 5N2826A