

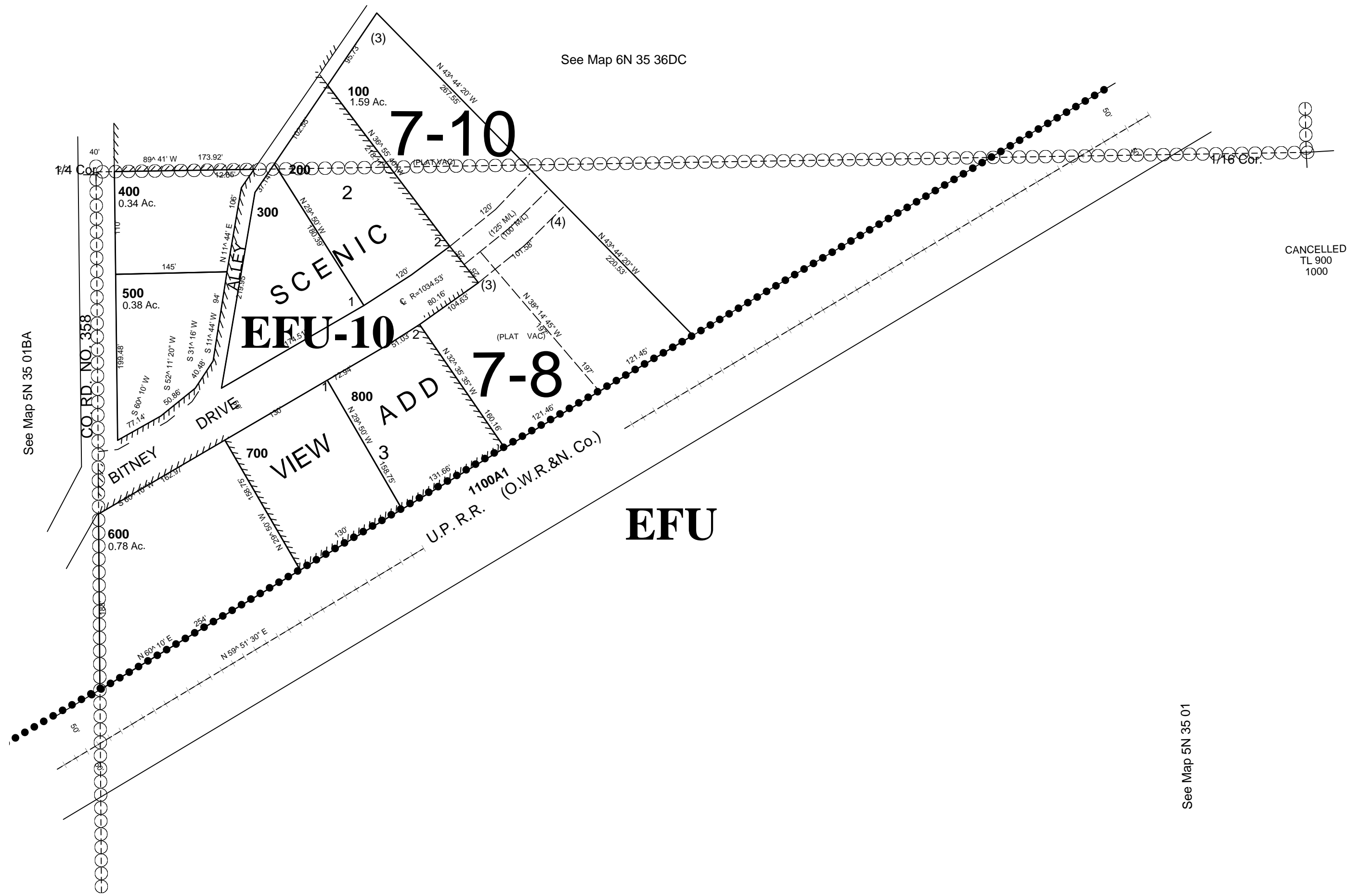
This map was prepared for assessment purposes

NW1/4 NE1/4 SEC 1 T5N R35E WM UMATILLA COUNTY

10/03/06

5N 35 01AB
AERIAL PHOTO NO. 11P-82

SCALE 1"=100'



See Map 6N 35 36DC

See Map 5N 35 01BA

CANCELLED
TL 900
1000

See Map 5N 35 01

See Map 5N 35 01

1/16 Cor.

1/16 Cor.

5N 35 01AB