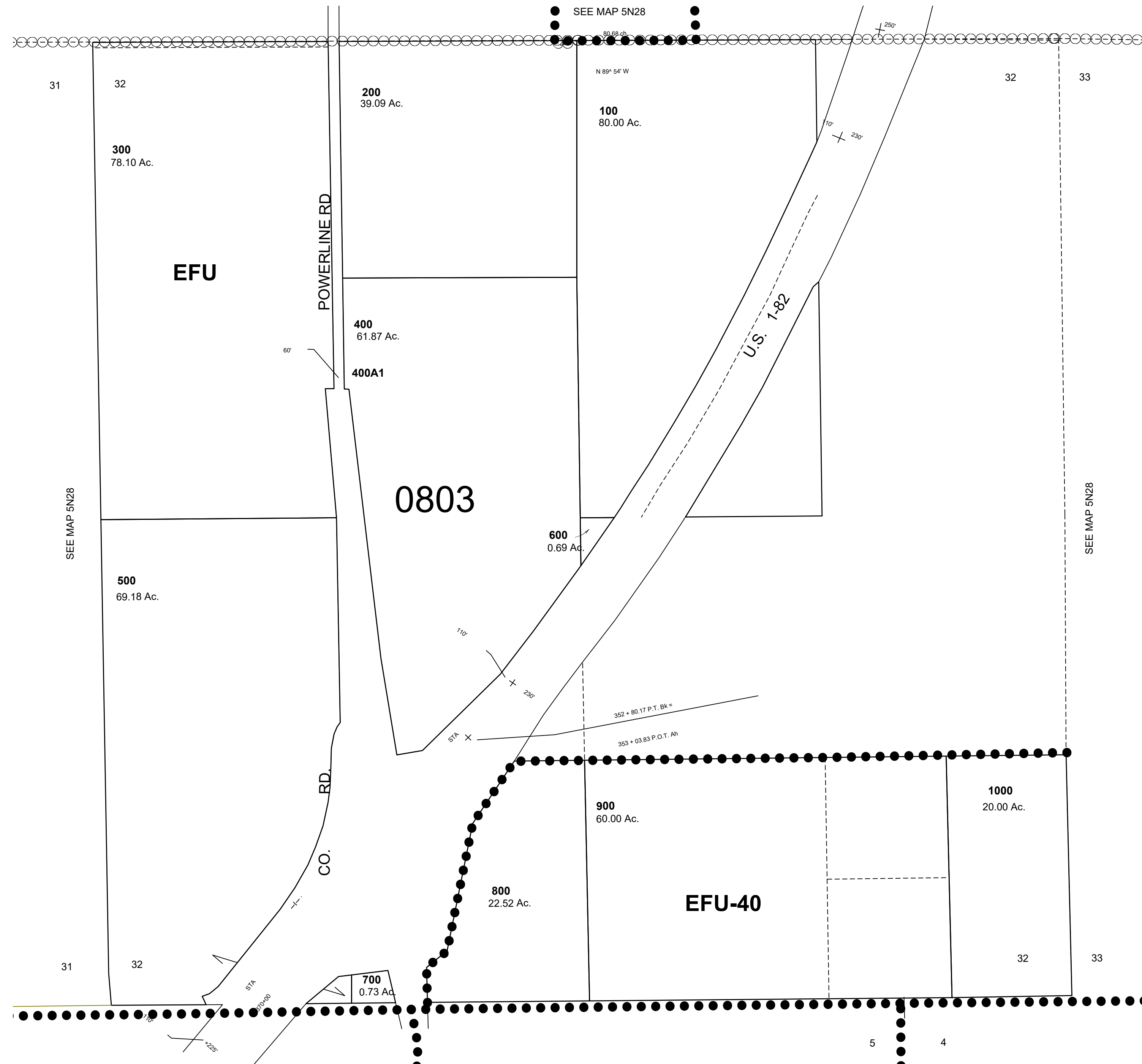


This map was prepared for Assessment & Taxation purposes only and was NOT prepared nor is it suitable for legal, engineering or surveying purposes.

SEC 32T5N R28E WM
 UMATILLA COUNTY
 SCALE 1"=400'

5N 28 32



SEE MAP 5N28

SEE MAP 5N28

REVISED: 06-22-2021

5N 28 32