

This map was prepared for assessment purposes

SW1/4 SW1/4 SEC 17 T5N R28E WM  
UMATILLA COUNTY

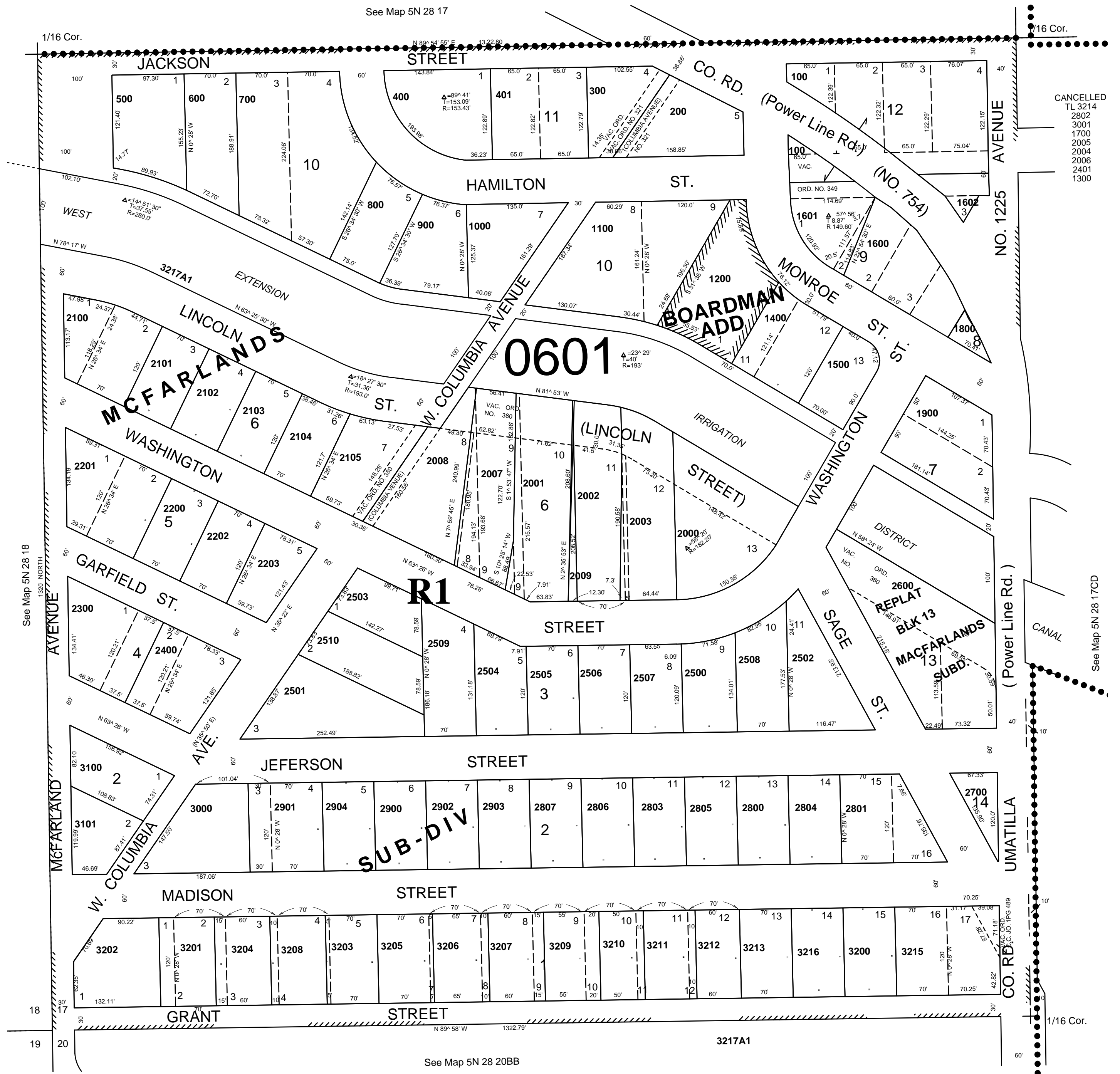
1"=100'

5/03/05

5N 28 17CC

AERIAL PHOTO NO. 1P-57

City of Umatilla



CANCELLED  
TL 3214  
2902  
3001  
1700  
2005  
2004  
2006  
2401  
1300

See Map 5N 28 17CC

5N 28 17CC