

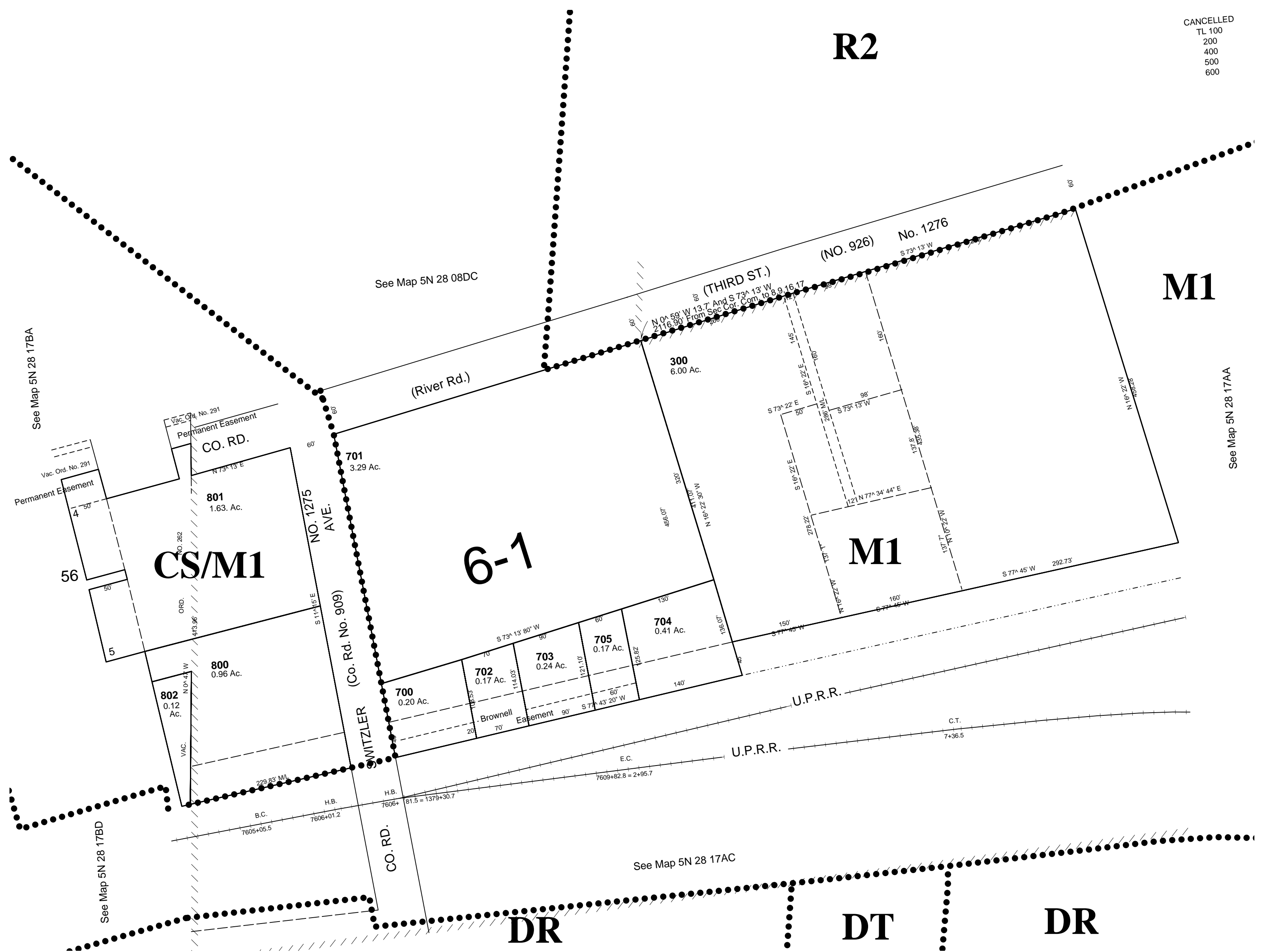
This map was prepared for assessment purposes

NW1/4 NE1/4 SEC 17 T5N R28E WM
UMATILLA COUNTY
SCALE 1"=100'

9/25/06

5N 28 17AB
AERIAL PHOTO NO. 1P-58
City of Umatilla

CANCELLED
TL 100
200
400
500
600



5N 28 17AB