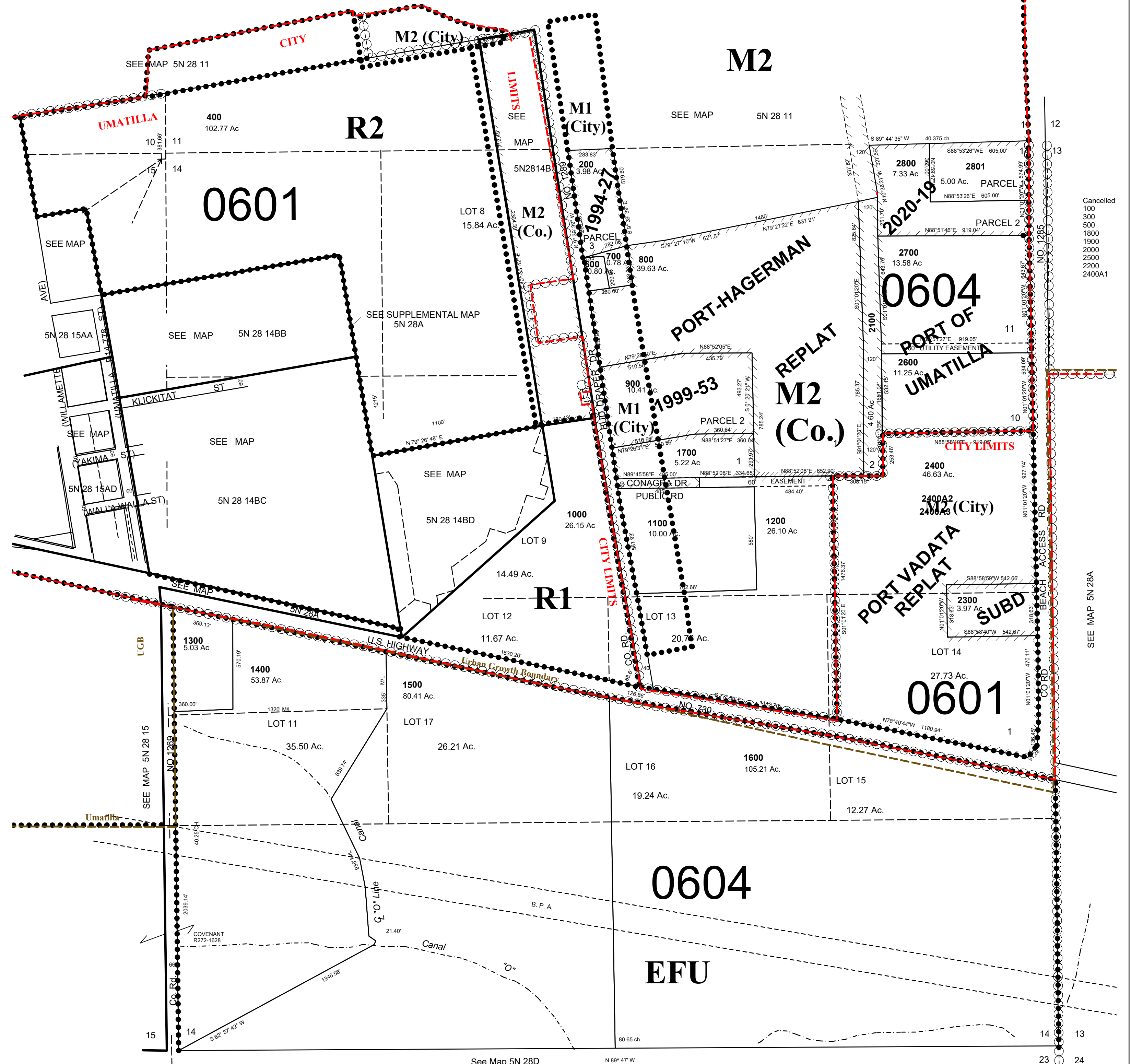


This map was prepared for Assessment & Taxation purposes only and was NOT prepared nor is it suitable for legal, engineering or surveying.

1"=400'

# SEC 14 T5N R28E WM UMATILLA COUNTY

5N 28 14  
AERIAL PHOTO NO. NZ 1P 58-60 & 102-103  
Umatilla City and Urban Growth Area



Cancelled  
100  
300  
500  
1800  
1900  
2000  
2500  
2200  
2400A1

SEE MAP 5N 28A

See Map 5N 28D N 89° 47' W

REVISED: 11-05-20

5N 28 14