

This map was prepared for assessment purposes

# SW1/4 NE1/4 SEC 22 T4N R35E WM UMATILLA COUNTY

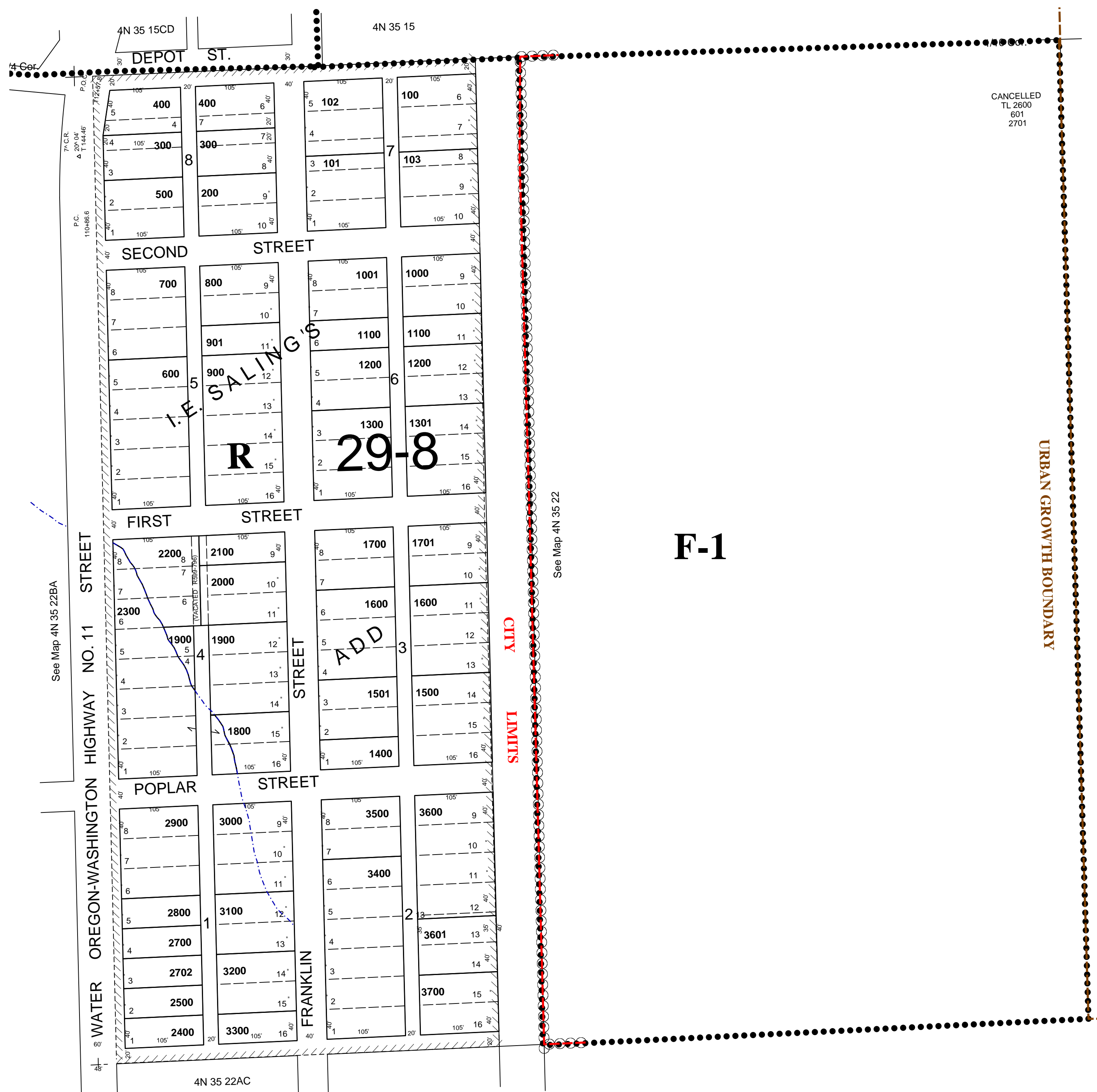
3/21/07

4N3522AB

AERIAL PHOTO NO. 5P-97  
CITY OF WESTON

See FEMA FIRM for areas subject to flood

SCALE 1"=100'



4N3522AB