

This map was prepared for assessment purposes

NW1/4 SW1/4 SEC 32 T4N R29E WM UMATILLA COUNTY

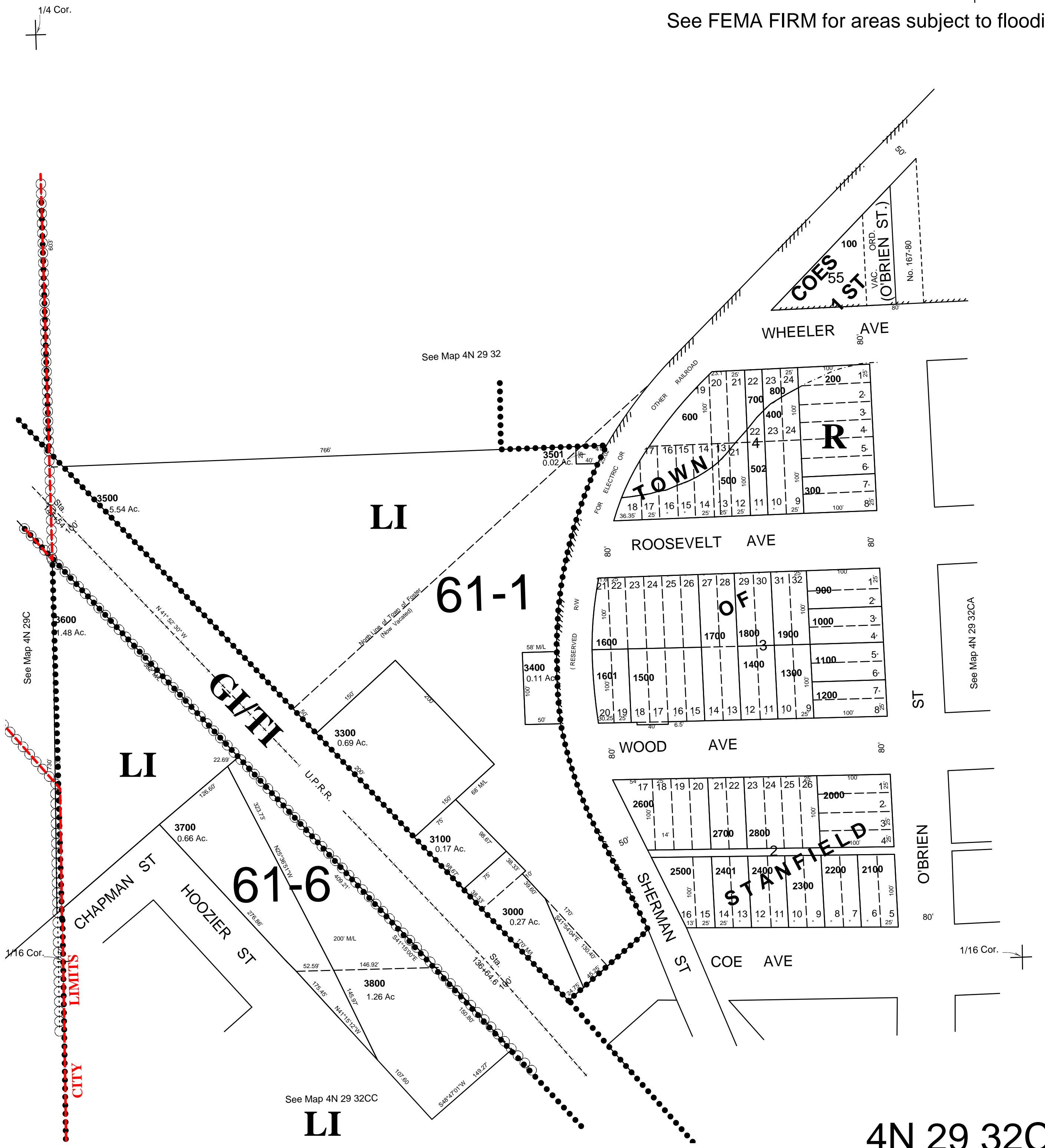
3/22/05

4N 29 32CB
AERIAL PHOTO NO. NZ 2P-45
CITY OF STANFIELD

1"=100'

1/16 Cor.

See FEMA FIRM for areas subject to flooding



4N 29 32CB