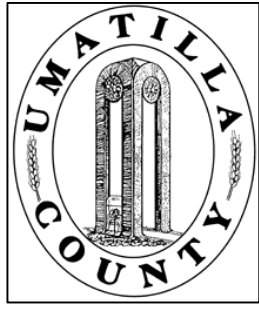


This map was prepared for Assessment purposes only.

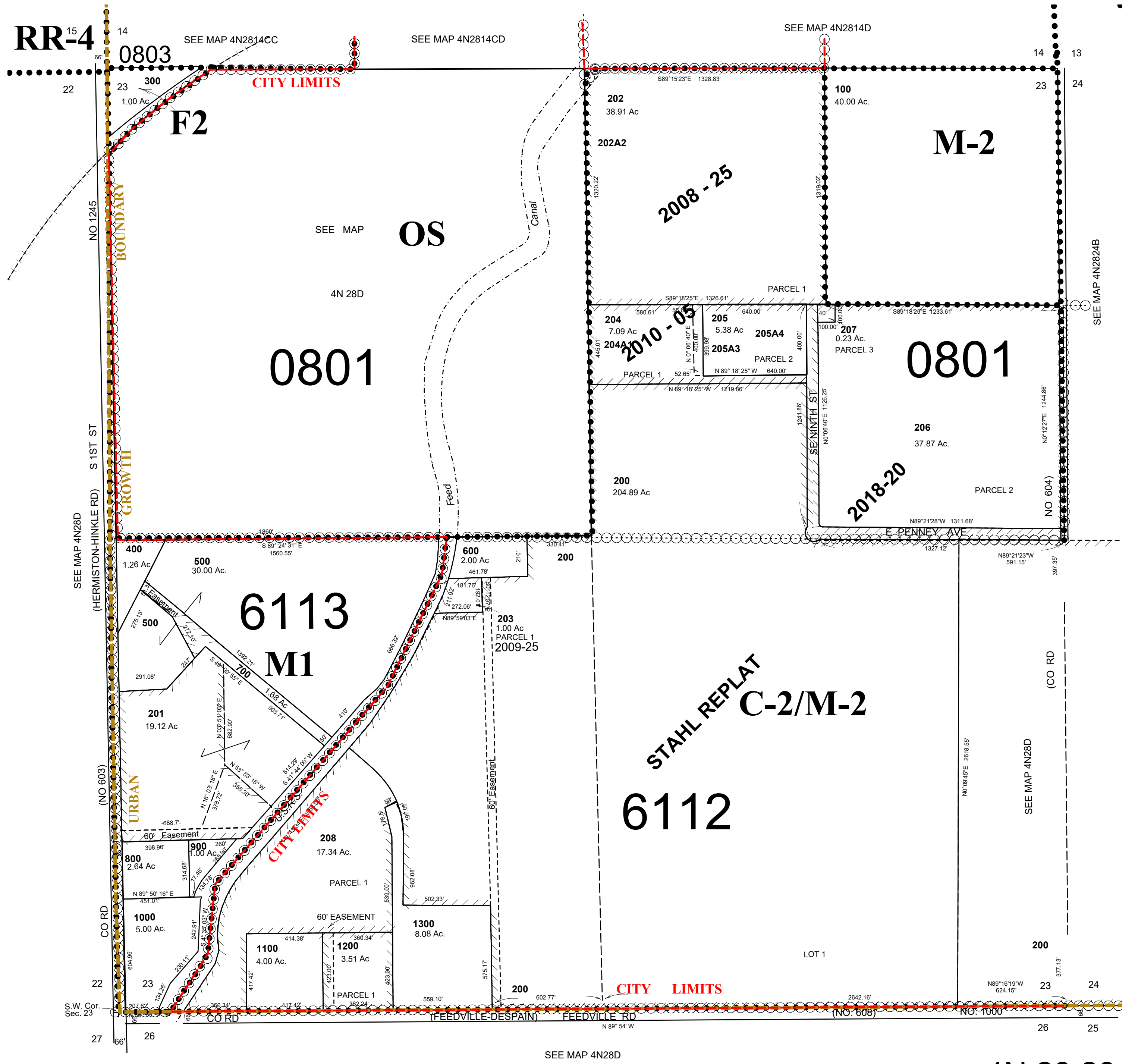


SEC 23 T4N R28E WM  
UMATILLA COUNTY, OR  
SCALE: 1" = 400'

04/01/2020

4N 28 23

41-42  
AERIAL PHOTO NO. NZ-2P-21-24  
Hermiston City & Urban Growth Area



4N 28 23