

This map was prepared for assessment purposes

NW1/4 SEC 21 T4N R28E WM UMATILLA COUNTY

SCALE 1"=200'

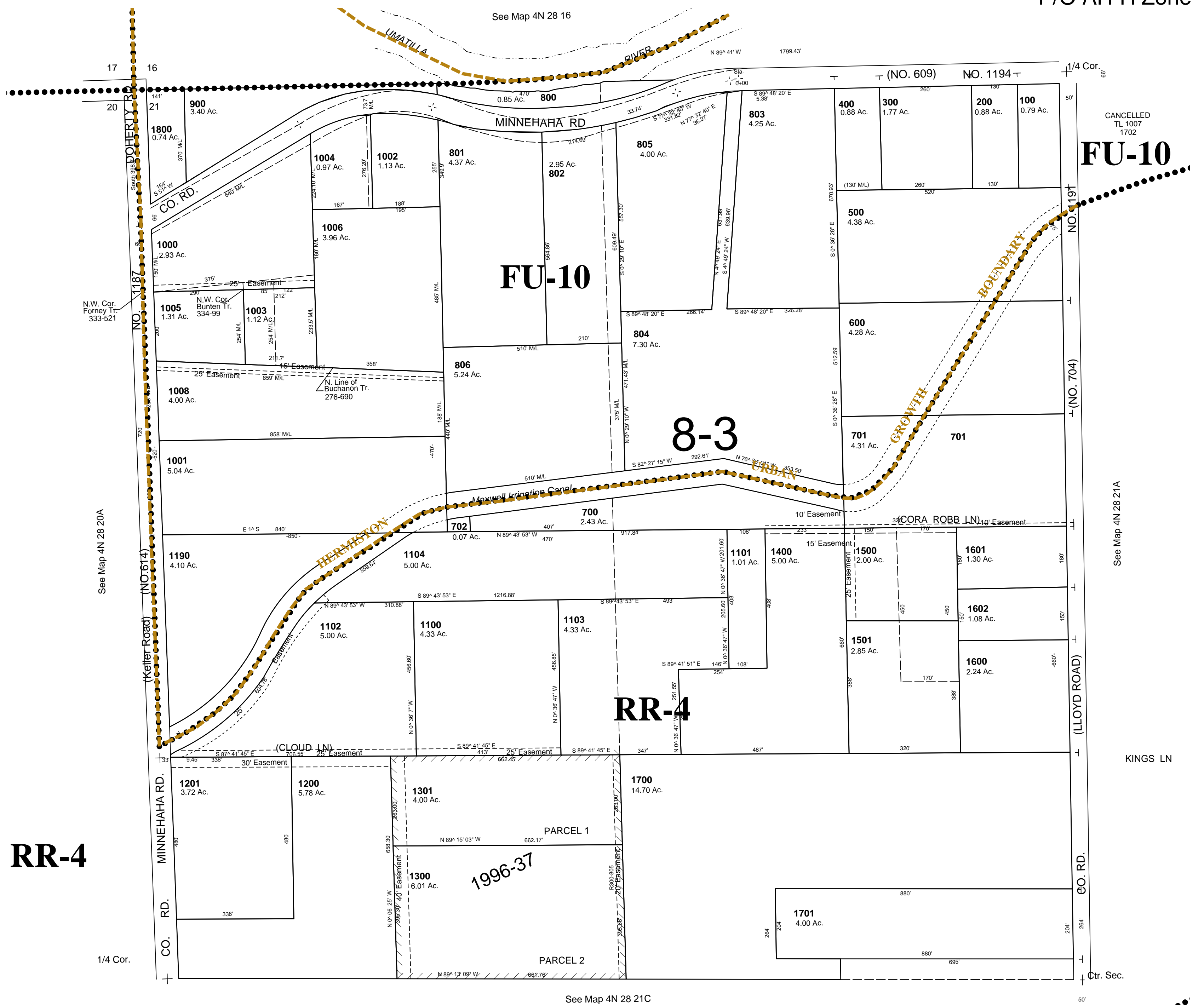
9/18/06

4N 28 21B

AERIAL PHOTO NO. 2P-25

See FIRM for areas subject to flooding
All in Butter Creek Critical Ground Water Area

P/O AH-H Zone



FU-10

FU-10

8-3

RR-4

RR-4

1996-37

4N 28 21B