

This map was prepared for assessment purposes

# SE1/4 SEC 16 T4N R28E WM UMATILLA COUNTY

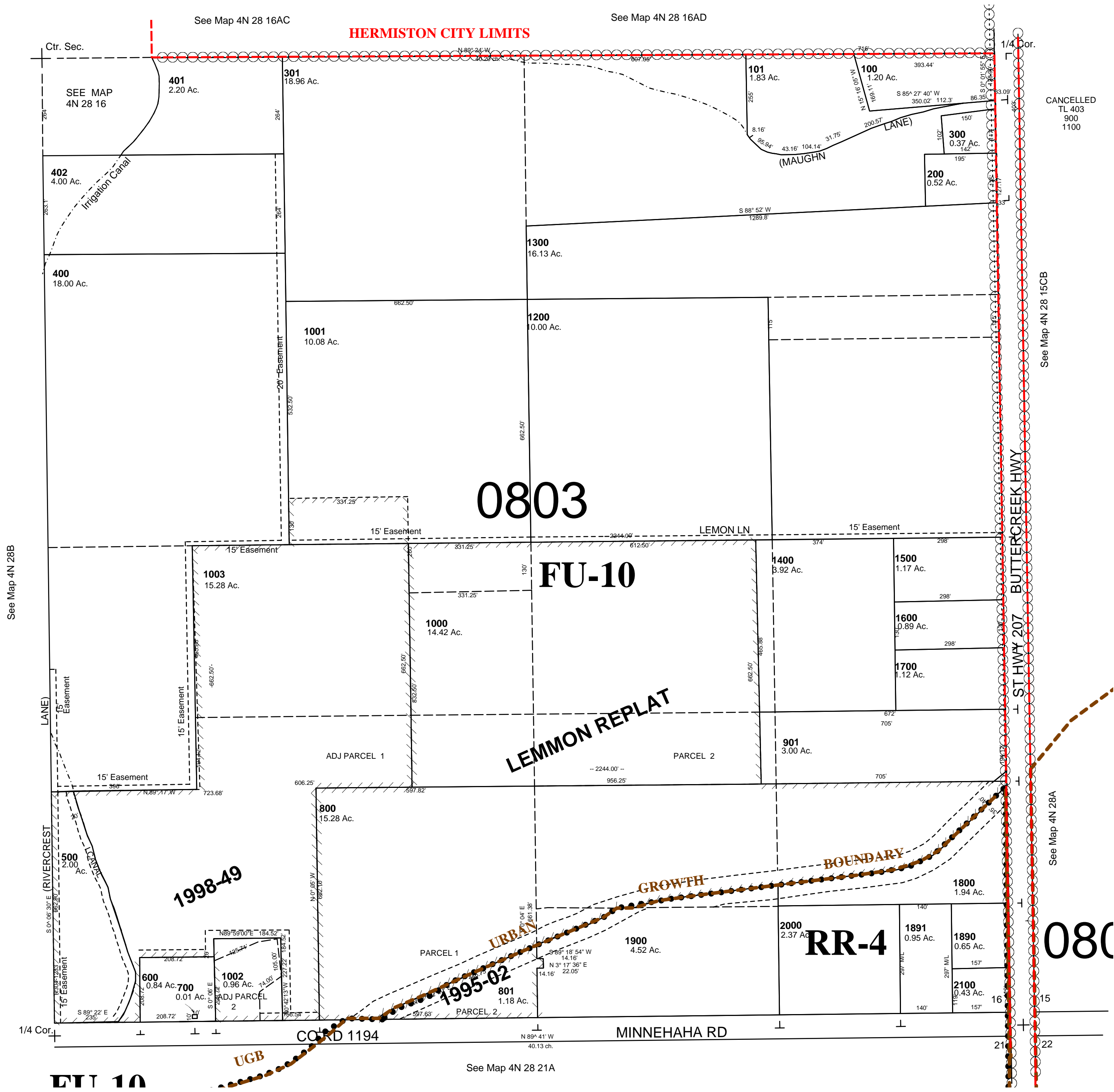
2/06/06

## 4N2816D

AERIAL PHOTO NO. NZ 1P-124

All in Stage Gulch Critical Ground Water Area  
All in Hermiston Airport Hazard Overlay Zone

1"=200'



## 4N 28 16D