

This map was prepared for Assessment & Taxation purposes only and has not been prepared or is it suitable for legal, engineering or surveying purposes.

# NE1/4 SW1/4 T4N R28E WM UMATILLA COUNTY

4N2815CA  
CITY OF HERMISTON

1"=100'  
SEE MAP 4N2815BD

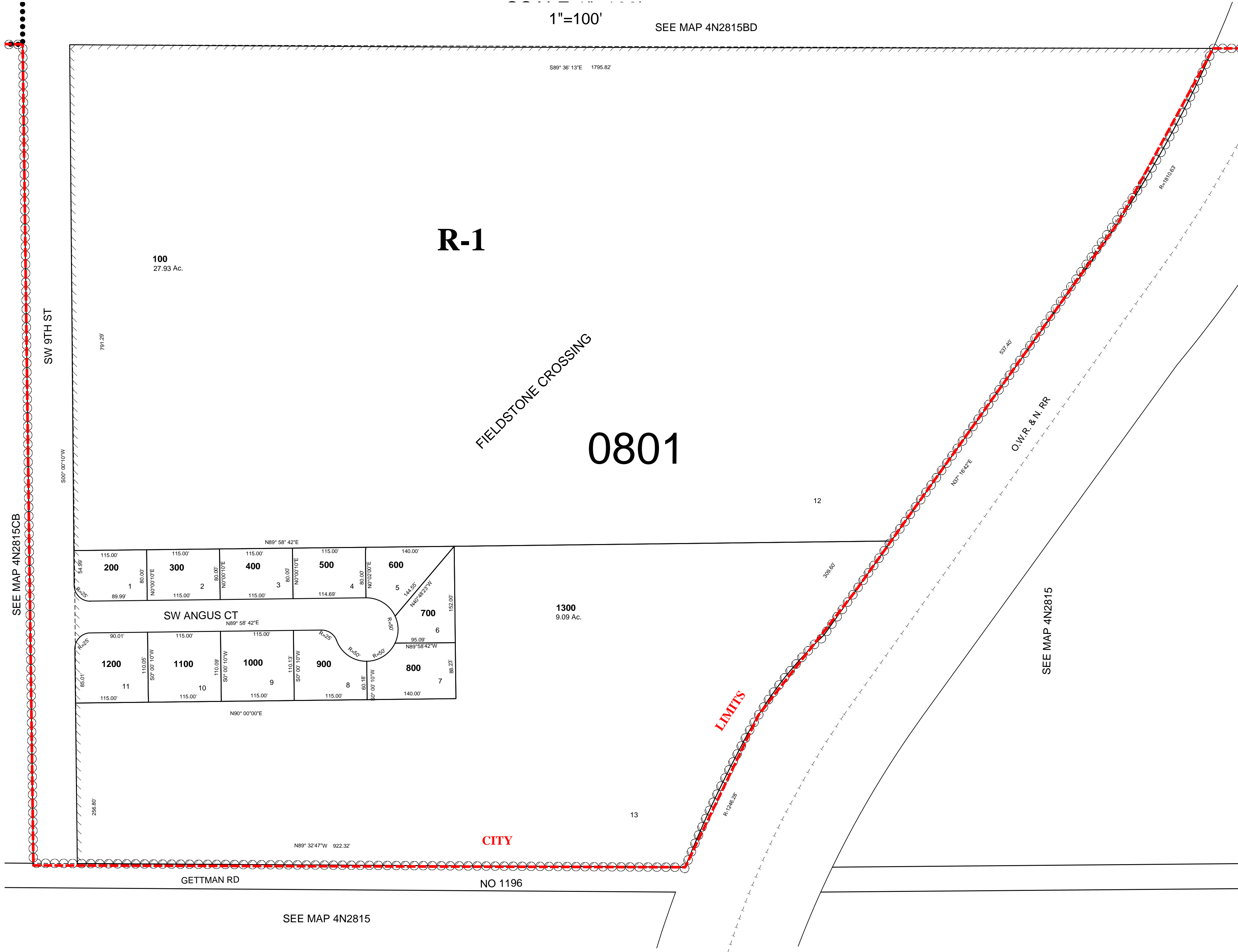
R-1

0801

100  
27.93 Ac.

1300  
9.09 Ac.

SW ANGUS CT  
N89° 58' 42"E



SEE MAP 4N2815

SEE MAP 4N2815

4N2815CA