

This map was prepared for Assessment and Taxation purposes only and has NOT been prepared for legal, engineering or surveying purposes.

NW 1/4 SW 1/4 SEC 14 T4N R28E WM
UMATILLA COUNTY
SCALE 1"=100'

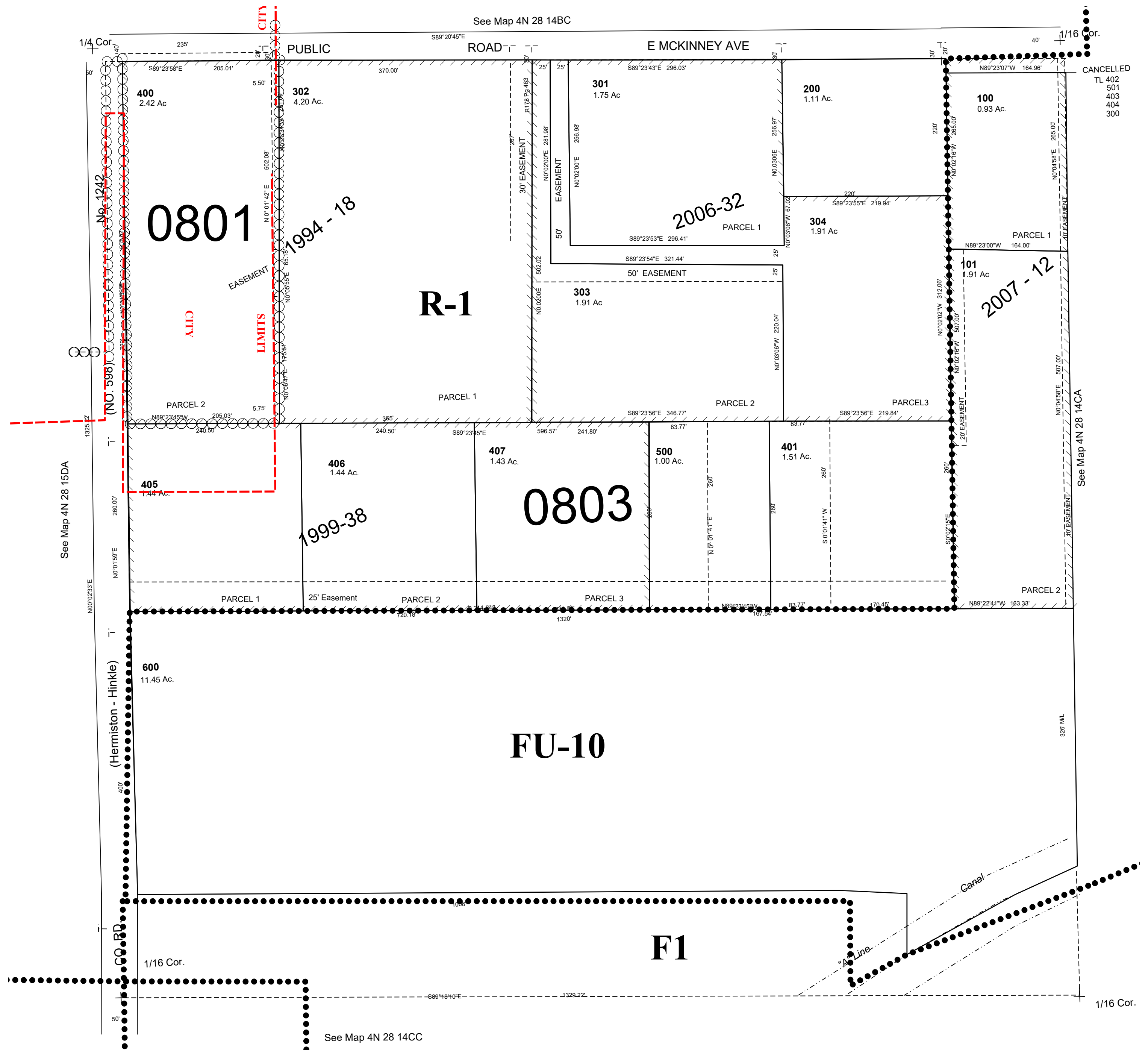
4/16/07

4N2814CB

HERMISTON UGA

All in Stage Gulch Critical Ground Water Area

All in Hermiston Airport Hazard Zone



4N2814CB