

This map was prepared for assessment purposes

# SE1/4 NW1/4 SEC 14 T4N R28E WM UMATILLA COUNTY

9/14/06

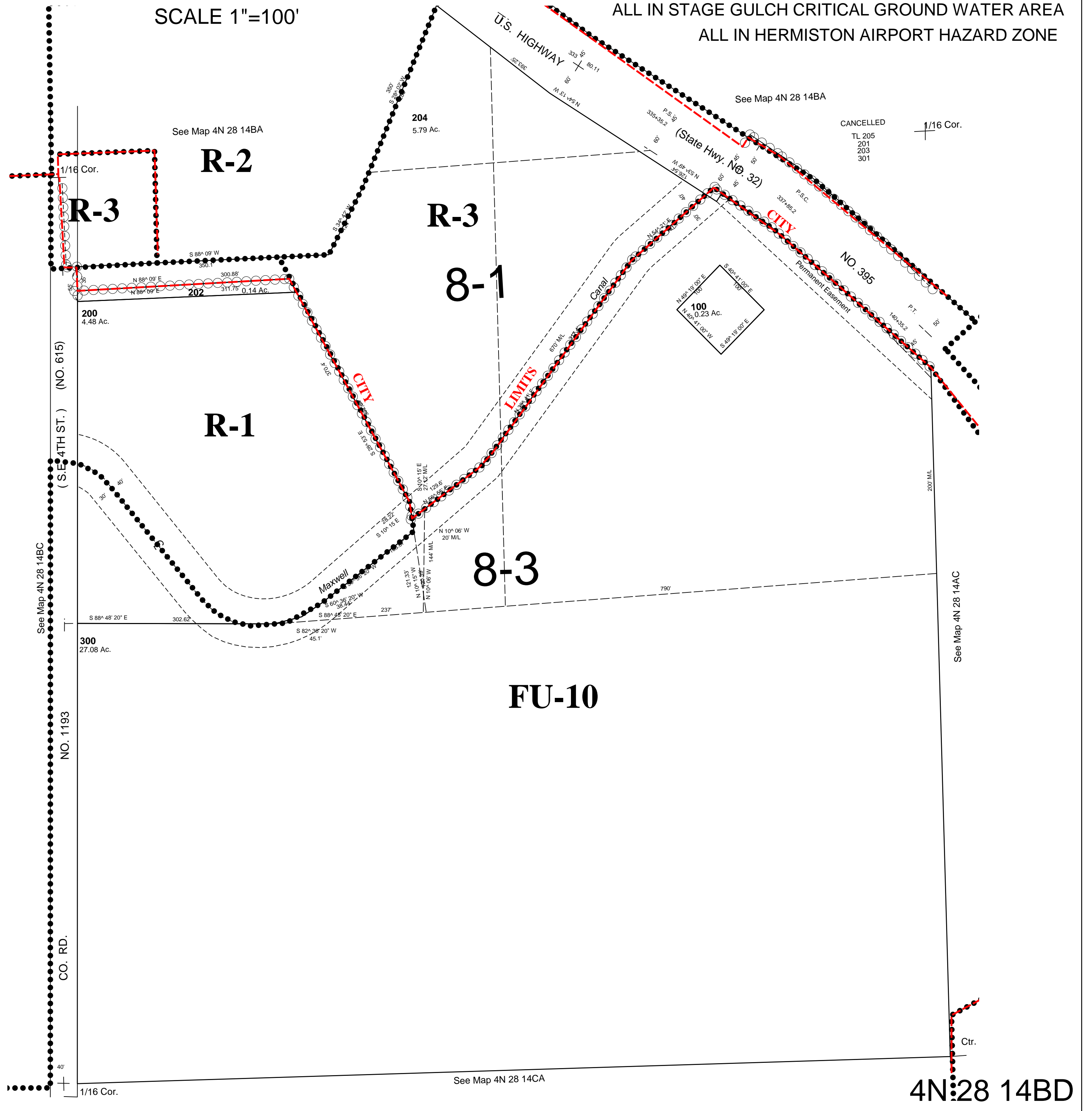
## 4N 28 14BD

AERIAL PHOTO NO. 2P-23

HERMISTON

ALL IN STAGE GULCH CRITICAL GROUND WATER AREA  
ALL IN HERMISTON AIRPORT HAZARD ZONE

SCALE 1"=100'



## 4N 28 14BD