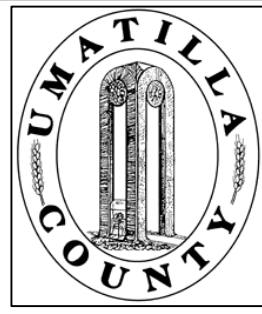


This map was prepared for Assessment purposes only.



# NE1/4 NW1/4 SEC 14 T4N R28E WM UMATILLA COUNTY, OR

10/31/05

## 4N2814BA

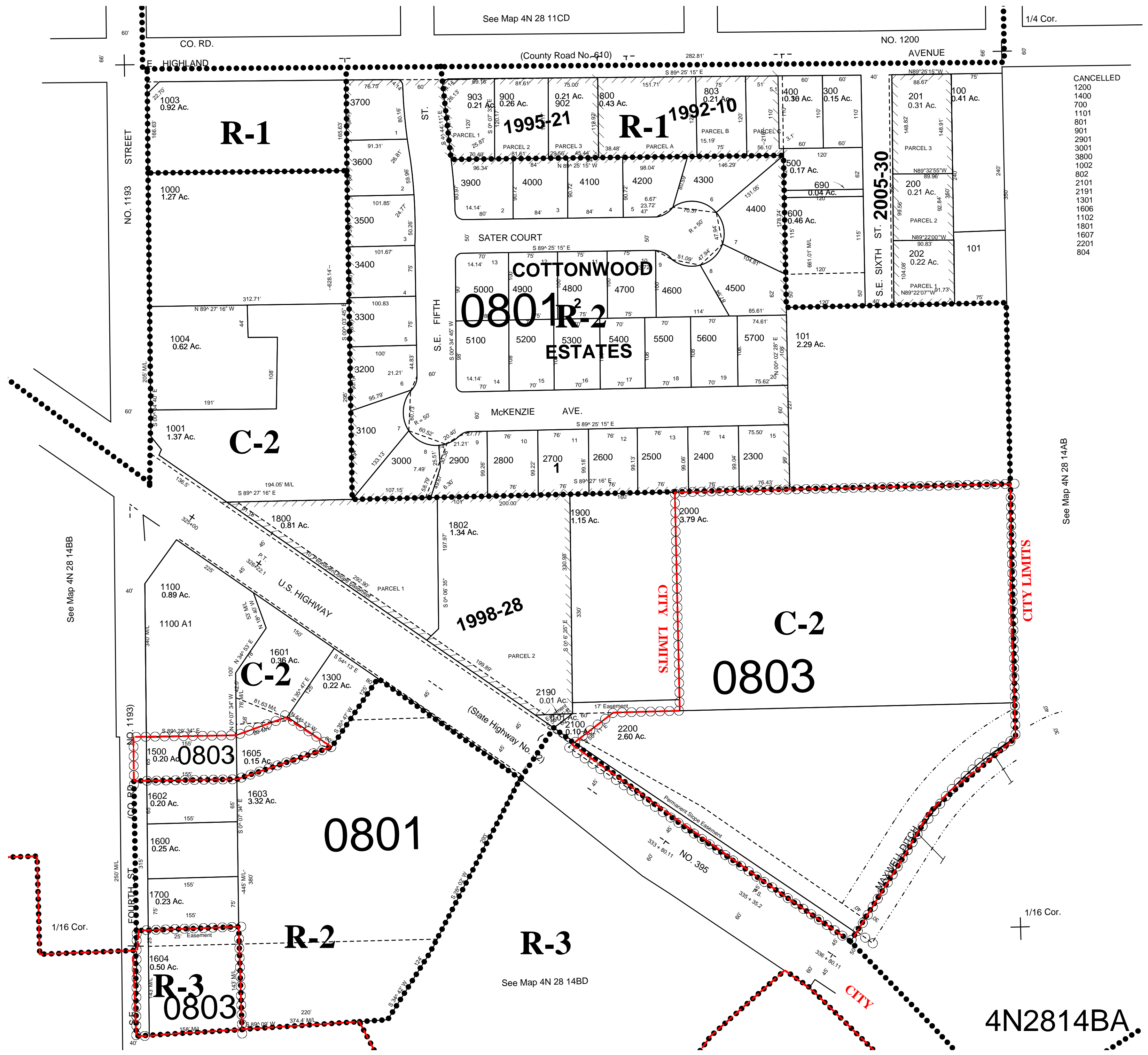
AERIAL PHOTO NO NZ-1P-123

Hermiston city & Urban Growth Area

All in Stage Gulch Critical Ground Water Area

All in Airport Hazard Overlay Zone

SCALE: 1" = 100'



- CANCELLED
- 1200
- 1400
- 700
- 1101
- 801
- 901
- 2901
- 3001
- 3800
- 1002
- 802
- 2101
- 2191
- 1301
- 1606
- 1102
- 1801
- 1607
- 2201
- 804

## 4N2814BA