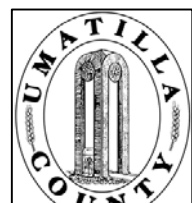


This map was prepared for Assessment purposes only.



SW1/4 NE1/4 SEC 14 T4N R28E WM
UMATILLA COUNTY, OR

3/31/21

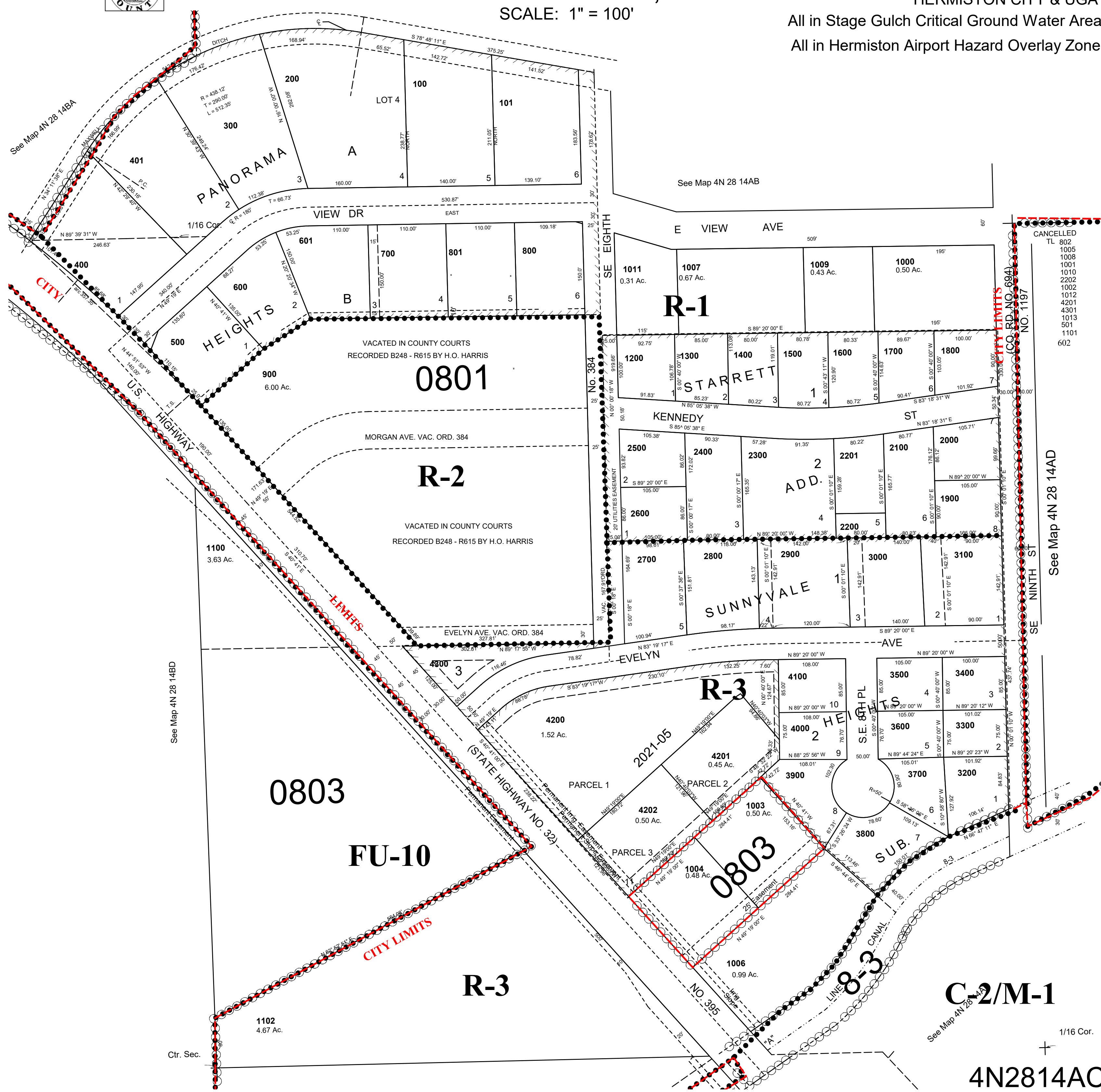
4N2814AC

SCALE: 1" = 100'

HERMISTON CITY & UGA

All in Stage Gulch Critical Ground Water Area

All in Hermiston Airport Hazard Overlay Zone



- CANCELLED
- TL 802
- 1005
- 1008
- 1001
- 1010
- 2202
- 1002
- 1012
- 4201
- 4301
- 1013
- 511
- 1101
- 602

See Map 4N 28 14AD

1/16 Cor.
+
4N2814AC