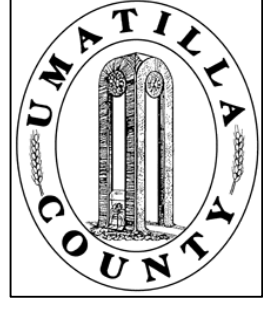


This map was prepared for Assessment & Taxation purposes only and has NOT been prepared for legal engineering or surveying purposes.



NW1/4 SE1/4 SEC 11 T 4N R 28E WM UMATILLA COUNTY, OR

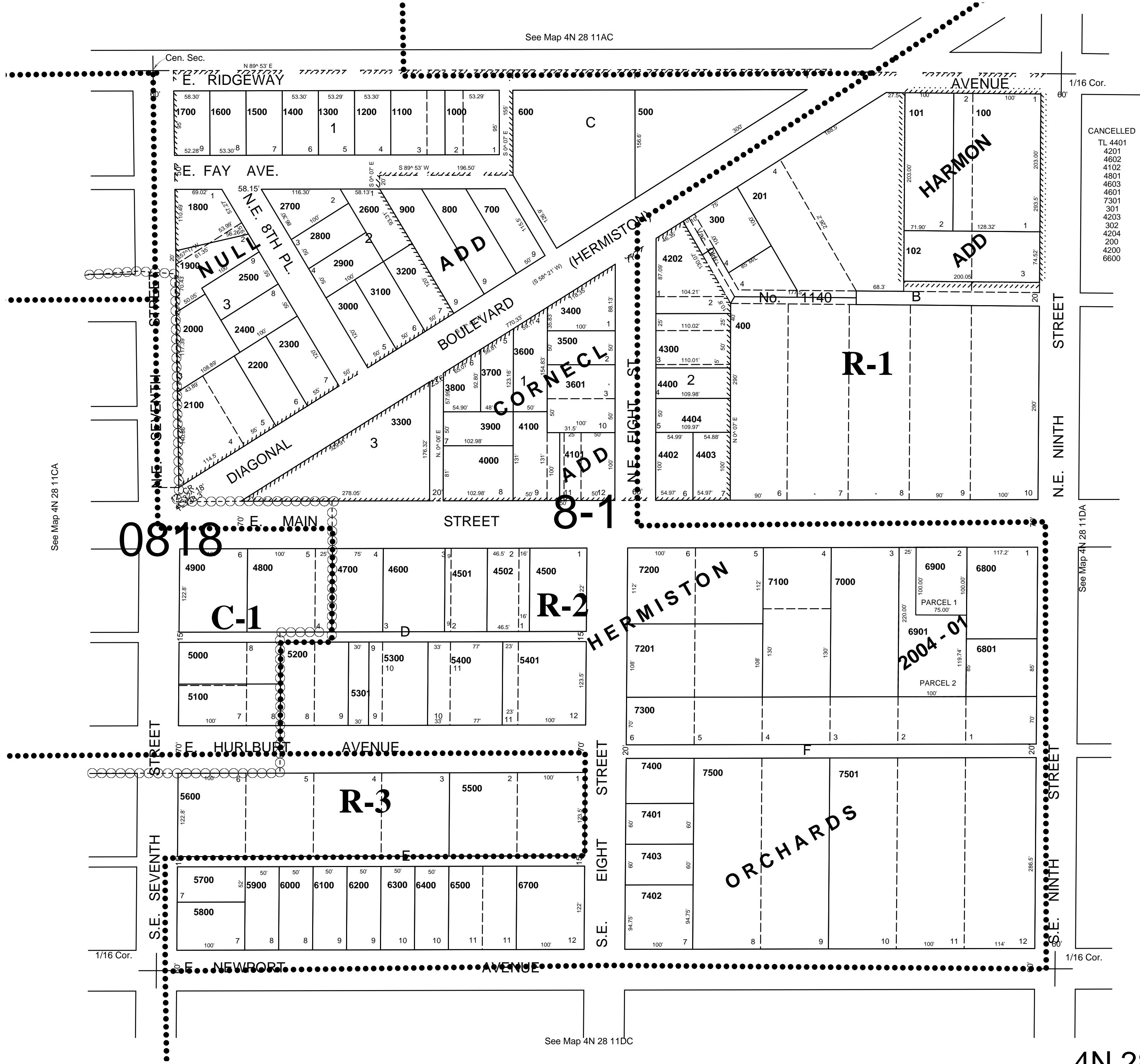
1/05/04

SCALE: 1" = 100'

4N 28 11DB

AERIAL PHOTO NO. NZ-1P-123

CITY OF HERMISTON



- CANCELLED
- TL 4401
 - 4201
 - 4602
 - 4102
 - 4801
 - 4603
 - 4601
 - 7301
 - 301
 - 4203
 - 302
 - 4204
 - 200
 - 4200
 - 6600

4N 28 11DB