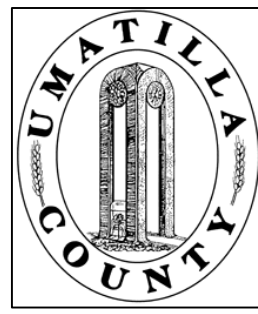


This map was prepared for Assessment & Taxation purposes only and was NOT prepared nor is it suitable for legal, engineering or surveying purposes.



NE1/4 SE1/4 SEC 11 T4N R28E WM UMATILLA COUNTY

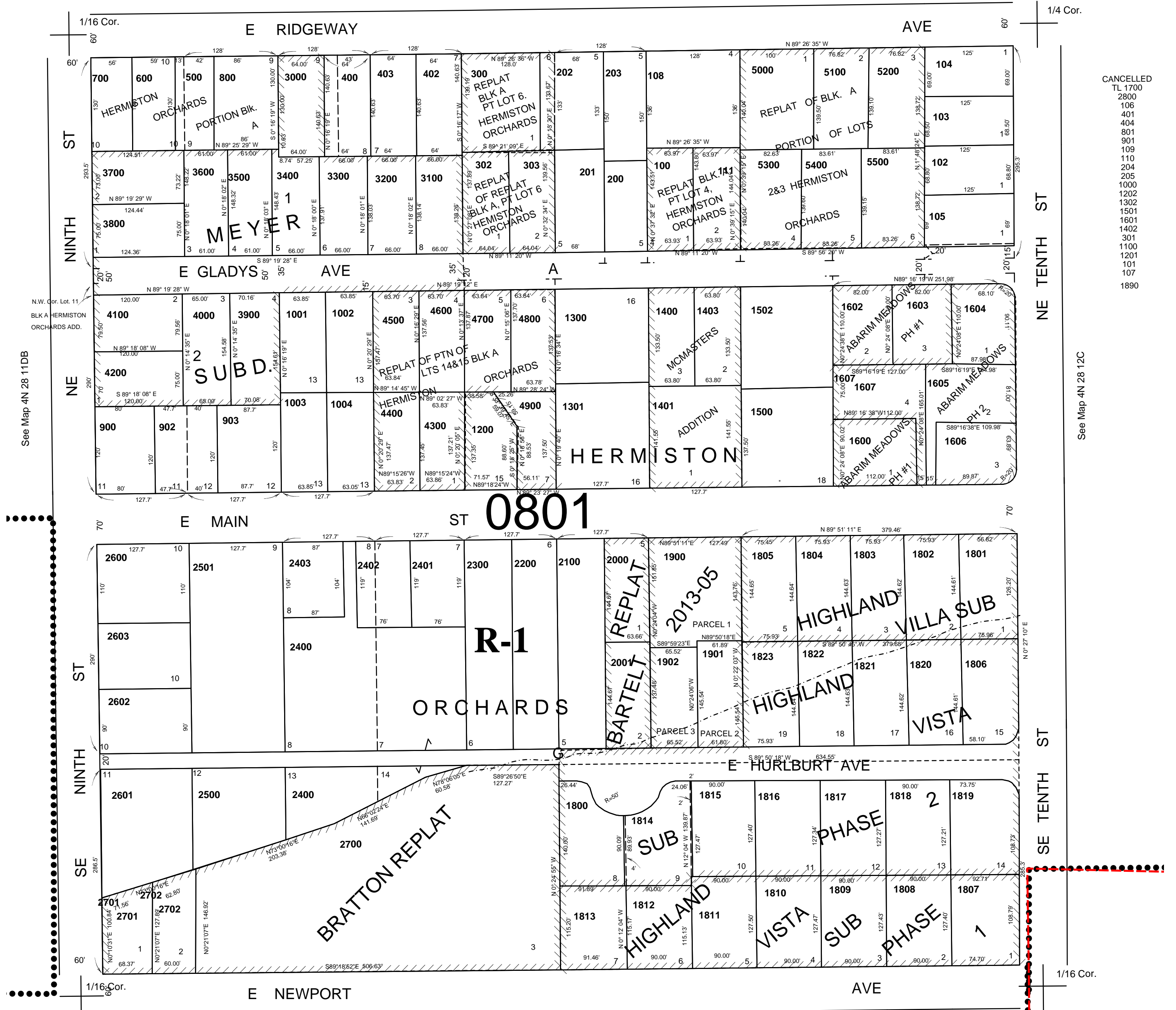
4N 28 11DA

AERIAL PHOTO NO. NZ-1P-123

CITY OF HERMISTON

SCALE: 1" = 100'

See Map 4N 28 11AD



See Map 4N 28 11DB

See Map 4N 28 12C

CANCELLED
 TL 1700
 2800
 106
 401
 404
 801
 901
 109
 110
 204
 205
 1000
 1202
 1302
 1501
 1601
 1402
 301
 1100
 1201
 101
 107
 1890

See Map 4N 28 11DD

4N 28 11DA

Revised: 04/01/2019