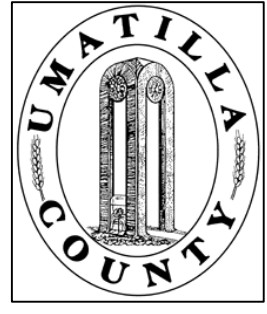


This map was prepared for Assessment & Taxation purposes only and was NOT prepared nor is it suitable for legal, engineering or surveying purposes.



SE1/4 SW1/4 SEC 11T4N R28E WM UMATILLA COUNTY, OR

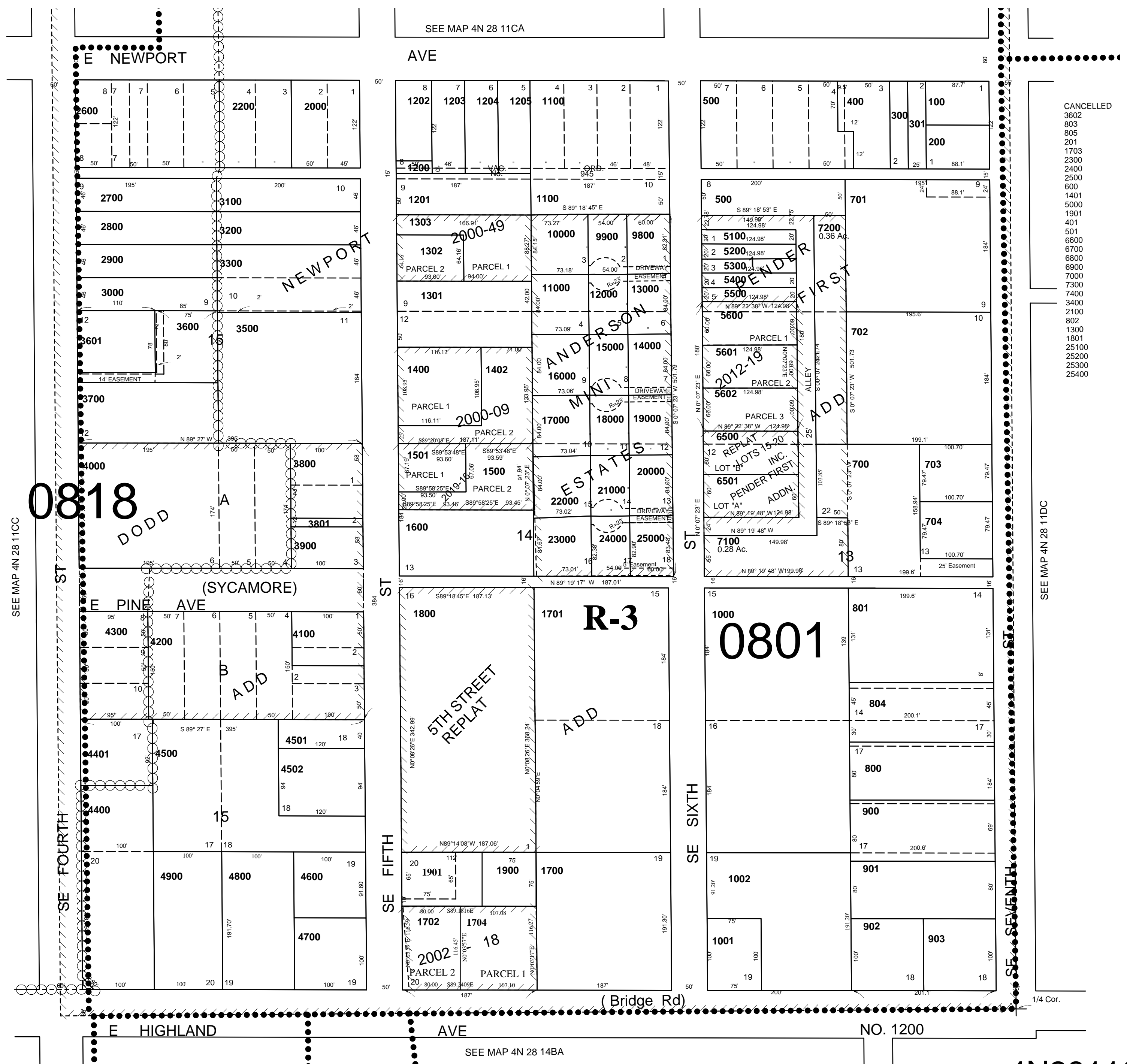
4N2811CD

06/03/2019

Aerial Photo No. NZ-1P-123

SCALE: 1" = 100'

CITY OF HERMISTON



4N2811CD