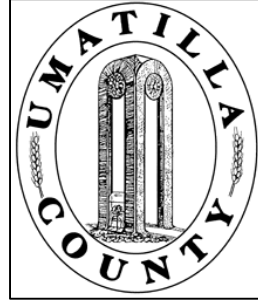


This map was prepared for Assessment & Taxation purposes only and was NOT prepared nor is it suitable for legal, engineering or surveying purposes.



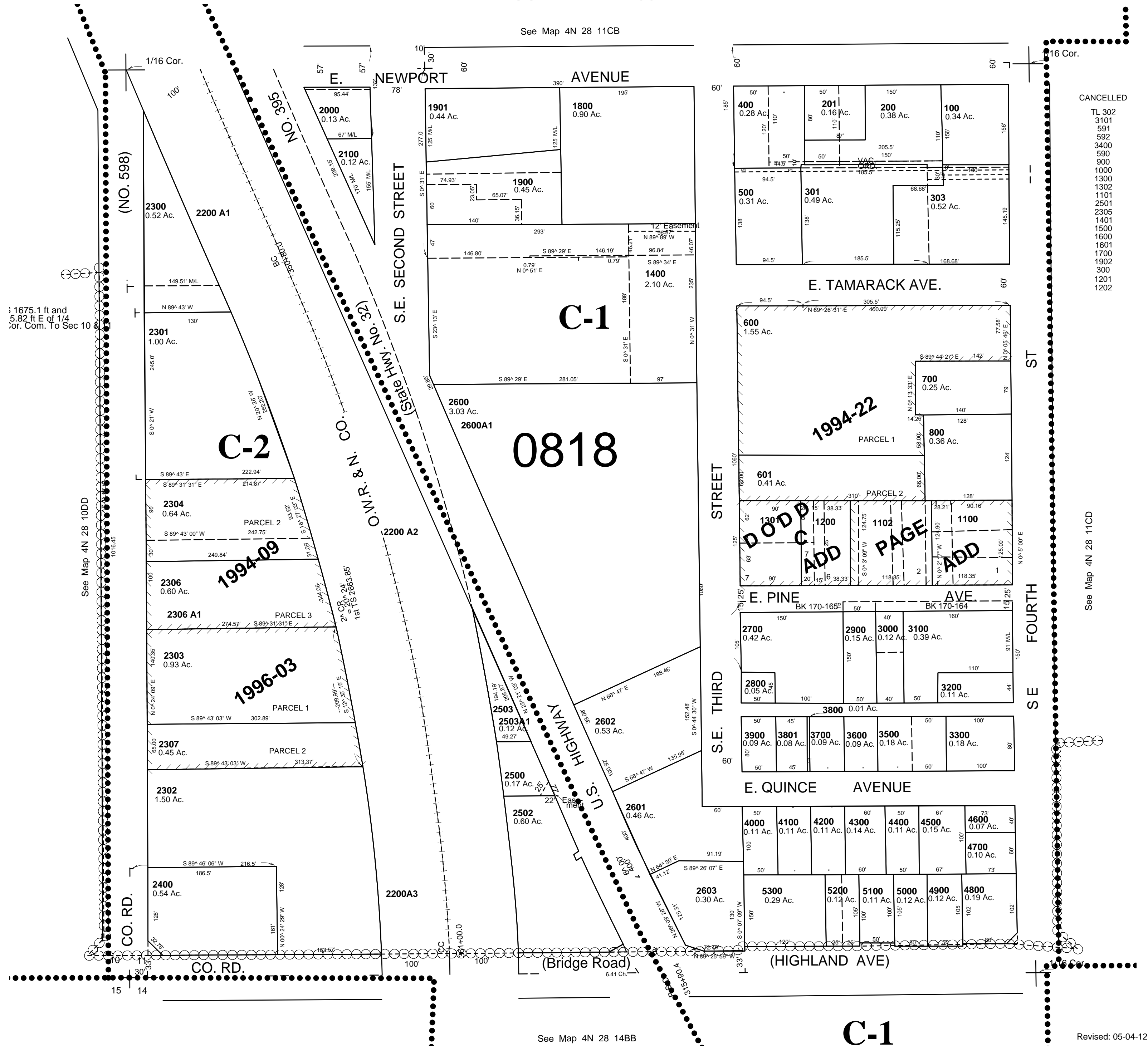
SW1/4 SW1/4 SEC 11 T4N R28E WM UMATILLA COUNTY

4N2811CC

AERIAL PHOTO NO. NZ-1P-123
CITY OF HERMISTON

SCALE: 1" = 100'

See Map 4N 28 11CB



- CANCELLED
- TL 302
- 3101
- 591
- 592
- 3400
- 590
- 1000
- 1300
- 1302
- 1101
- 2501
- 2305
- 1401
- 1500
- 1600
- 1601
- 1700
- 1902
- 300
- 1301
- 1202

See Map 4N 28 11CD

Revised: 05-04-12

4N2811CC