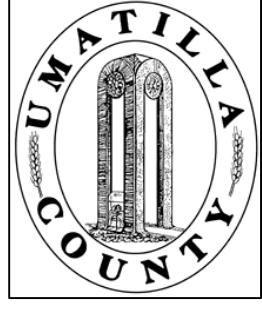


This map was prepared for Assessment & Taxation purposes only and was NOT prepared nor is it suitable for legal, engineering or surveying purposes.



SE1/4 NE1/4 SEC 11 T 4N R 28E WM UMATILLA COUNTY, OR

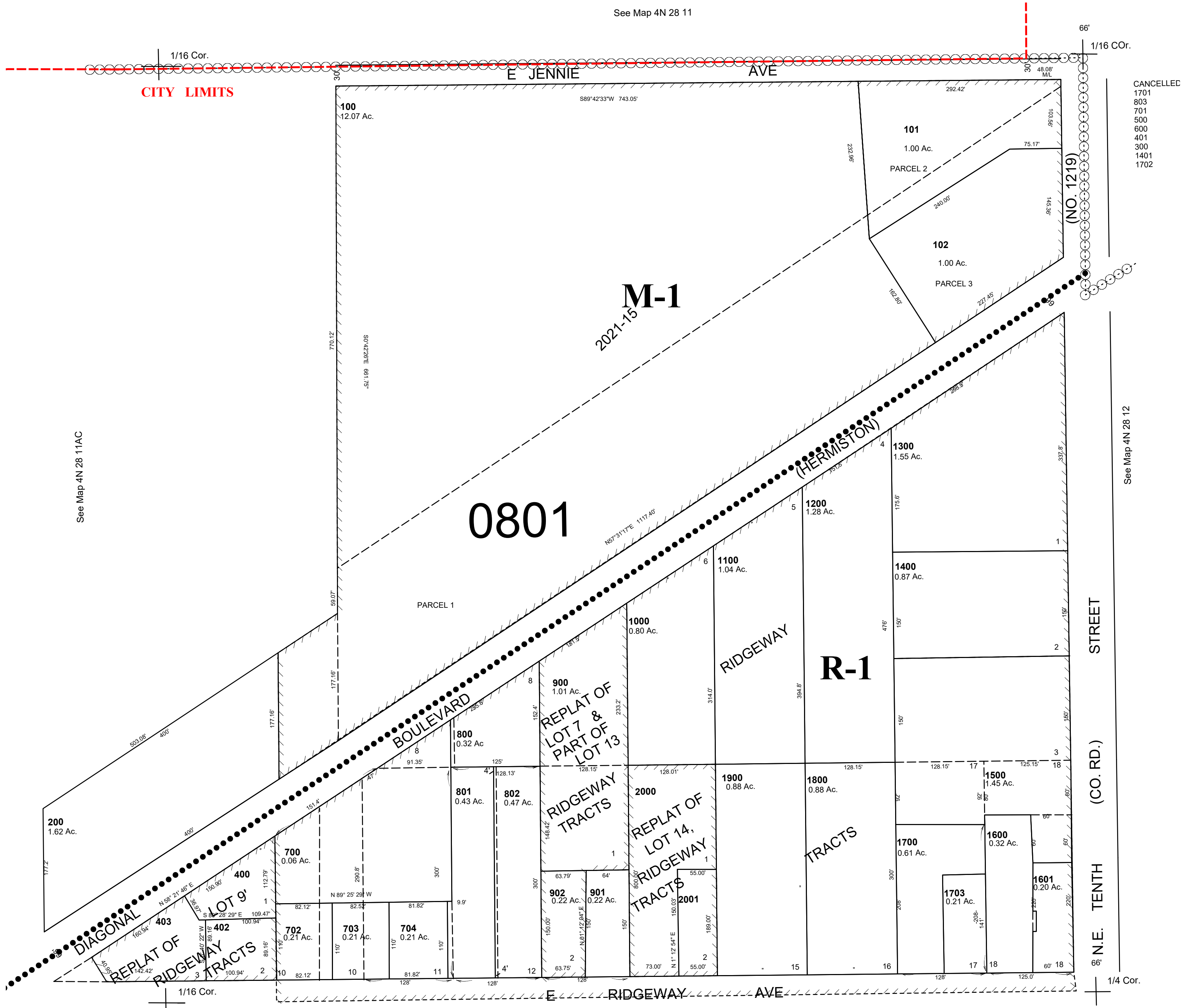
SCALE: 1" = 100'

4N 28 11AD

AERIAL PHOTO NO. NZ-1P-123

CITY OF HERMISTON

See Map 4N 28 11



CANCELLED
1701
803
701
500
600
401
300
1401
1702

See Map 4N 28 11AC

See Map 4N 28 12

See Map 4N 28 11DA

Revised: 7/06/21

4N 28 11AD