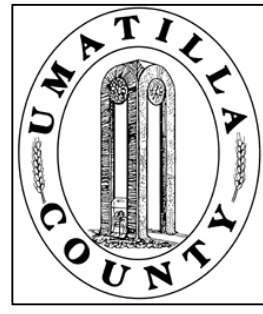


This map was prepared for Assessment & Taxation purposes only and was NOT prepared nor is it suitable for legal, engineering or surveying purposes.



# SE1/4 SE1/4 SEC 10T4N R28E WM UMATILLA COUNTY

4N2810DD  
AERIAL PHOTO NO 1P-123  
CITY OF HERMISTON

SCALE: 1" = 100'

R-3

C-2

See Map 4N 28 10DA

1/16 Cor.

1/16 Cor.

W. ORCHARD

Vacated Ord. No. 158

## 0818

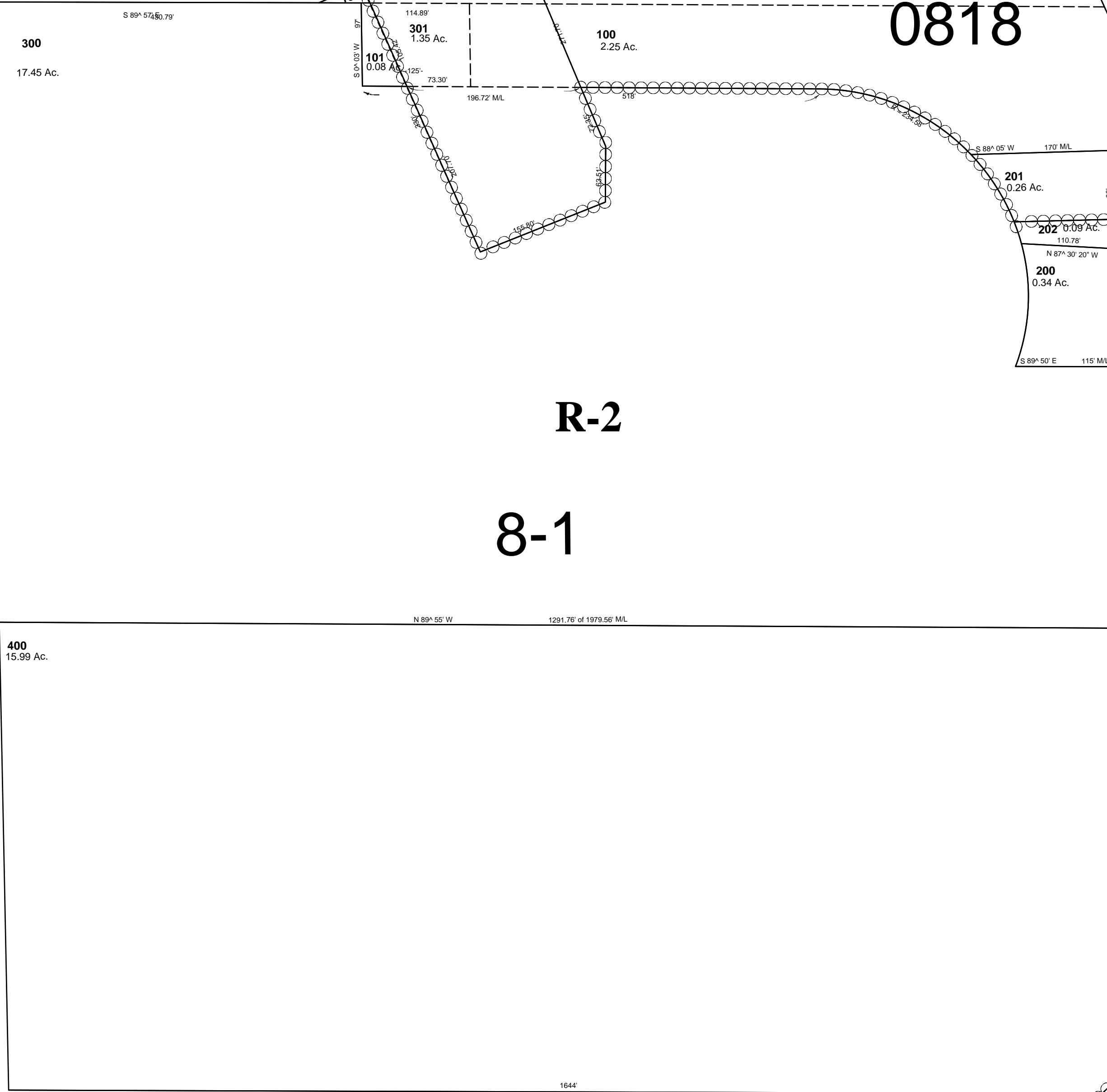
CANCELLED  
TL 102  
103

R-2

## 8-1

See Map 4N 28 10DC

See Map 4N 28 11CC



1/16 Cor.

W. HIGHLAND

(Bridge Road)

AVENUE

4N2810DD

See Map 4N 28 15AA