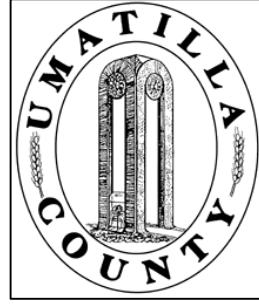


This map was prepared for Assessment and Taxation purposes only and has NOT been prepared for legal, engineering or surveying purposes.



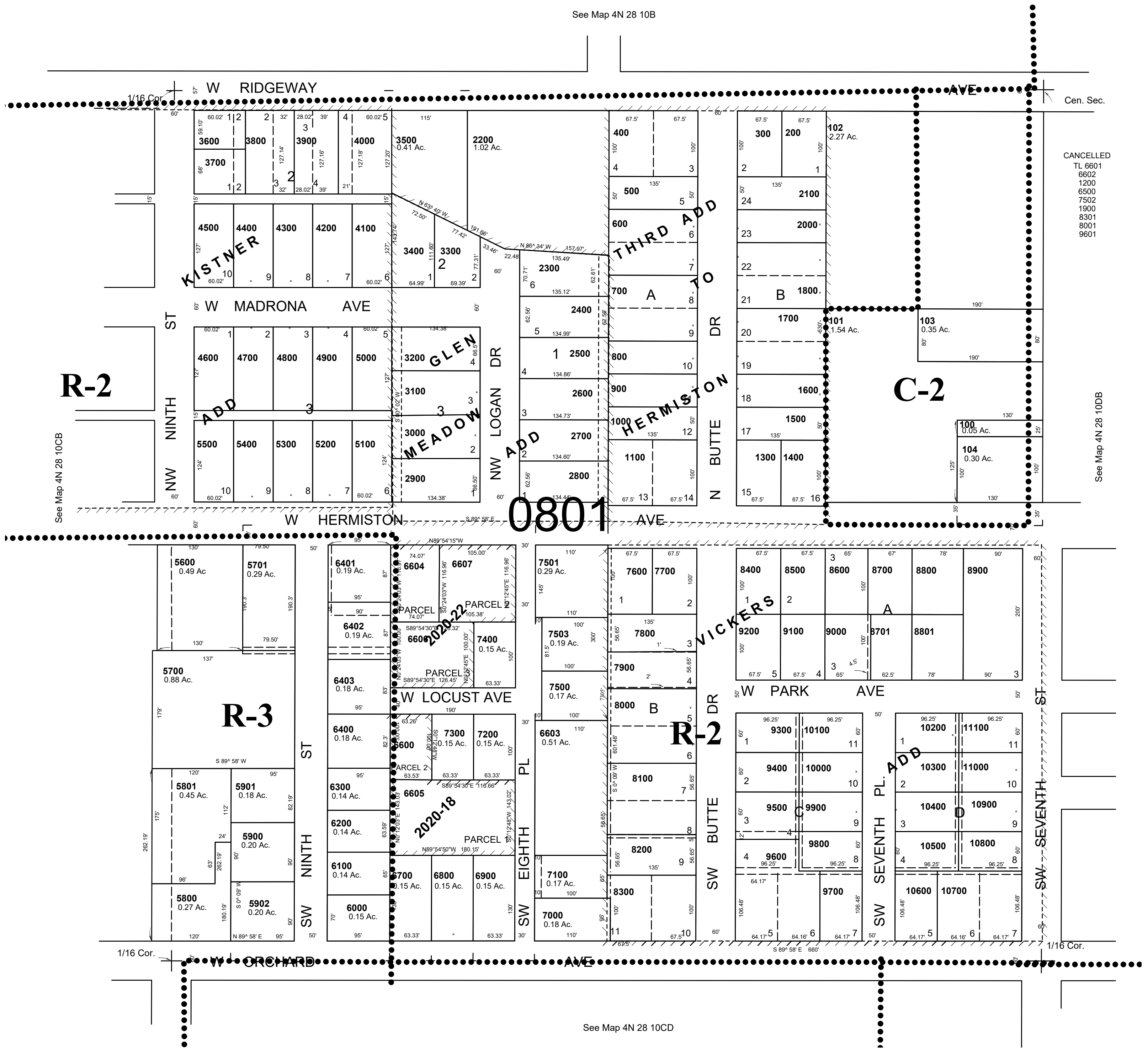
# NE1/4 SW1/4 SEC 10 T4N R28E WM UMATILLA COUNTY, OR

4N2810CA

CITY OF HERMISTON

SCALE: 1" = 100'

See Map 4N 28 10B



4N2810CA