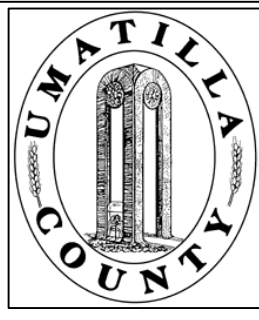


This map was prepared for Assessment purposes only.



SE1/4 SE1/4 SEC 9 T4N R28E WM
UMATILLA COUNTY, OR

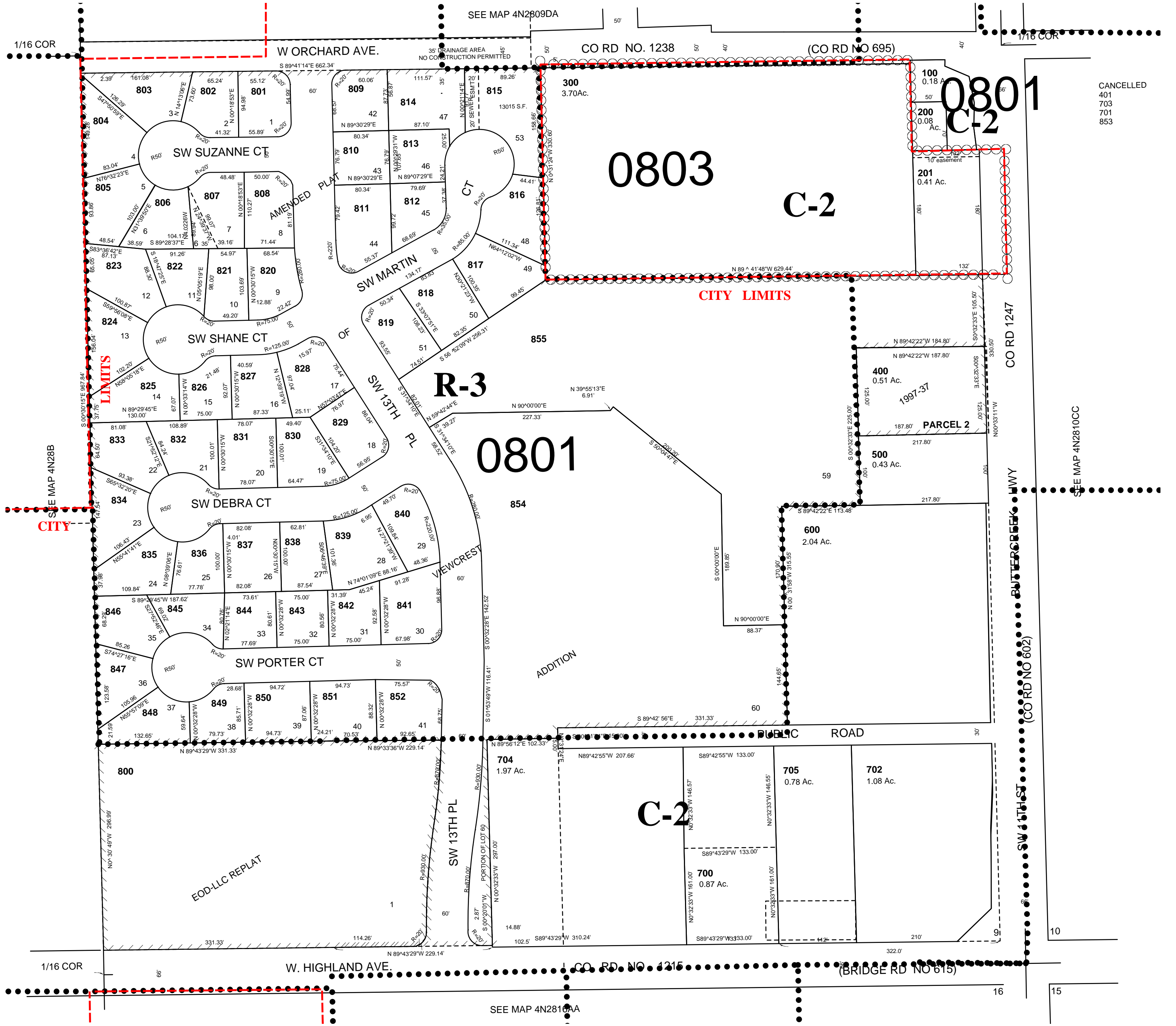
SCALE: 1" =100'

07/03/2019

4N2809DD

Hermiston City & Urban Growth Area
All in Butter Creek Critical Ground Water Area

All in Airport Hazard Overlay Zone



CANCELLED
401
703
701
853

4N2809DD