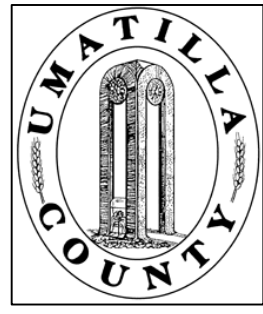


This map was prepared for Assessment purposes only.



NE1/4 SE1/4 SEC 9 T4N R28E WM
UMATILLA COUNTY, OR

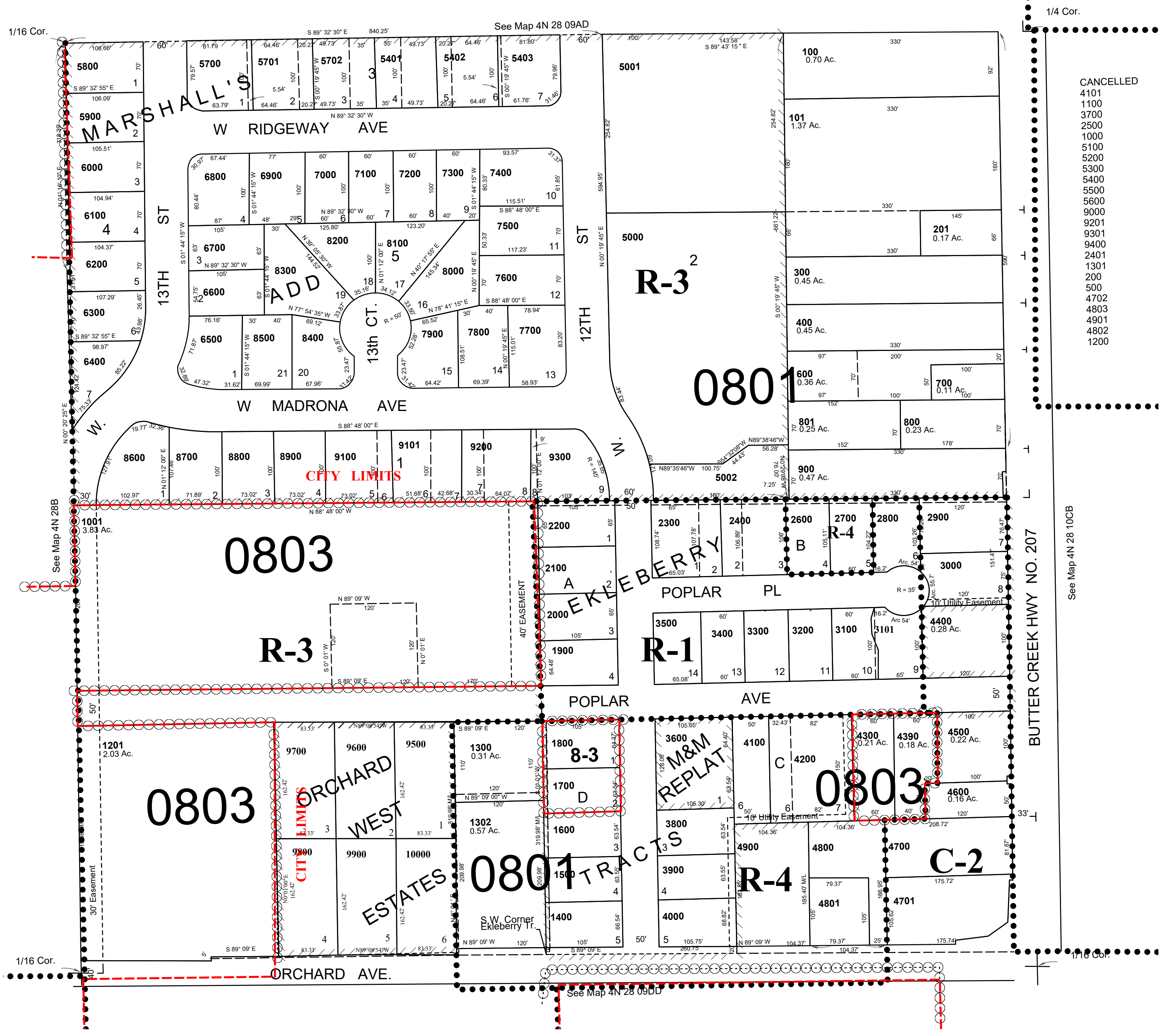
5/24/05

4N2809DA

SCALE: 1" = 100'

Ekleberry Tracts
Marshall's Add
Aerial Photo No. 1P-121

Hermiston City & Urban Growth Area
All in Butter Creek Critical Ground Water Area



- CANCELLED
- 4101
- 1100
- 3700
- 2500
- 1000
- 5100
- 5200
- 5300
- 5400
- 5500
- 5600
- 9000
- 9201
- 9301
- 9400
- 2401
- 1301
- 200
- 500
- 4702
- 4803
- 4901
- 4802
- 1200

4N2809DA