

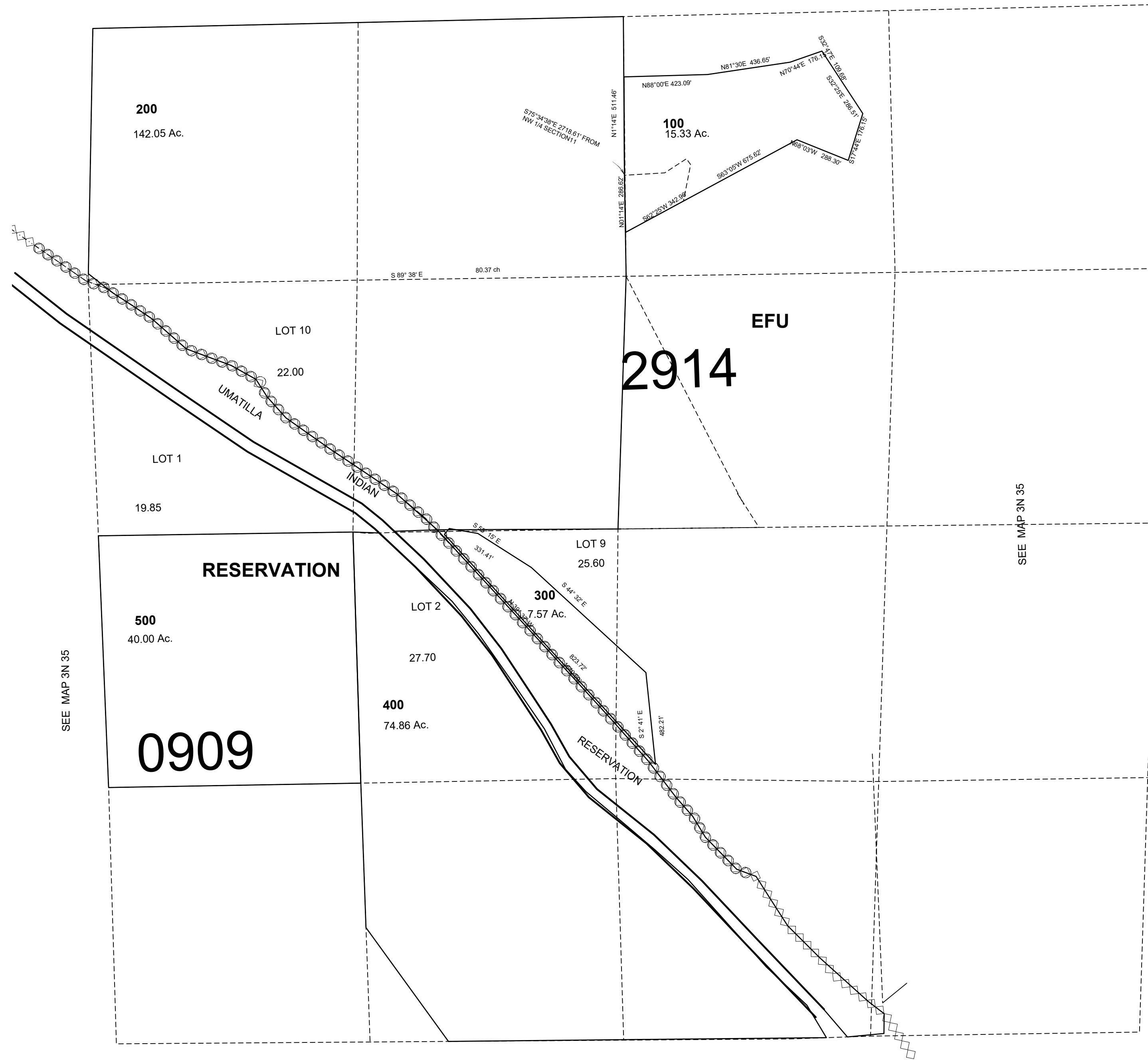
This map was prepared for Assessment & Taxation purposes only and was NOT prepared nor is it suitable for legal, engineering or surveying purposes.

# SEC 11 T3N R35E WM UMATILLA COUNTY, OR

3N3511

SCALE: 1" = 400'

SEE MAP 3N 35



SEE MAP 3N 35

REVISED: 04-09-2021

3N3511