

This map was prepared for assessment purposes

SE1/4 SE1/4 SEC 4 T3N R34E WM UMATILLA COUNTY

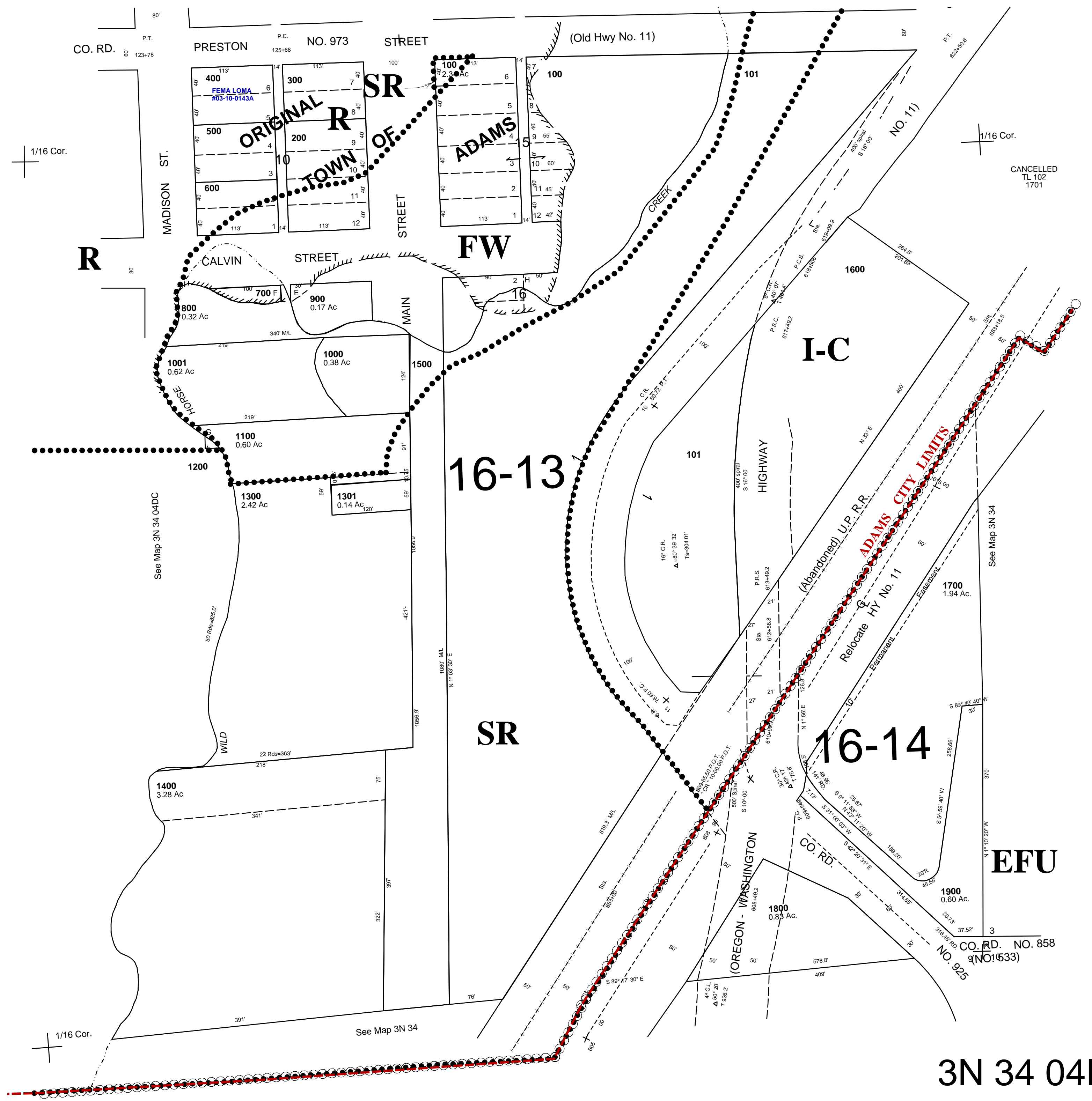
6/20/05

3N 34 04DD

AERIAL PHOTO NO. 5P - 169
CITY OF ADAMS

See FIRM for areas subject to flooding

SCALE: 1" = 100'



3N 34 04DD