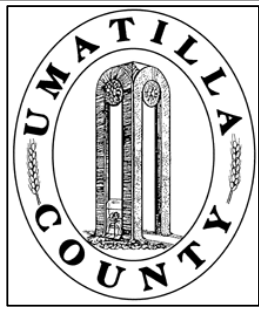


This map was prepared for Assessment purposes only.



# SE1/4 NE/14 SEC 4 T3N R34E WM UMATILLA COUNTY, OR

SCALE: 1" = 100'

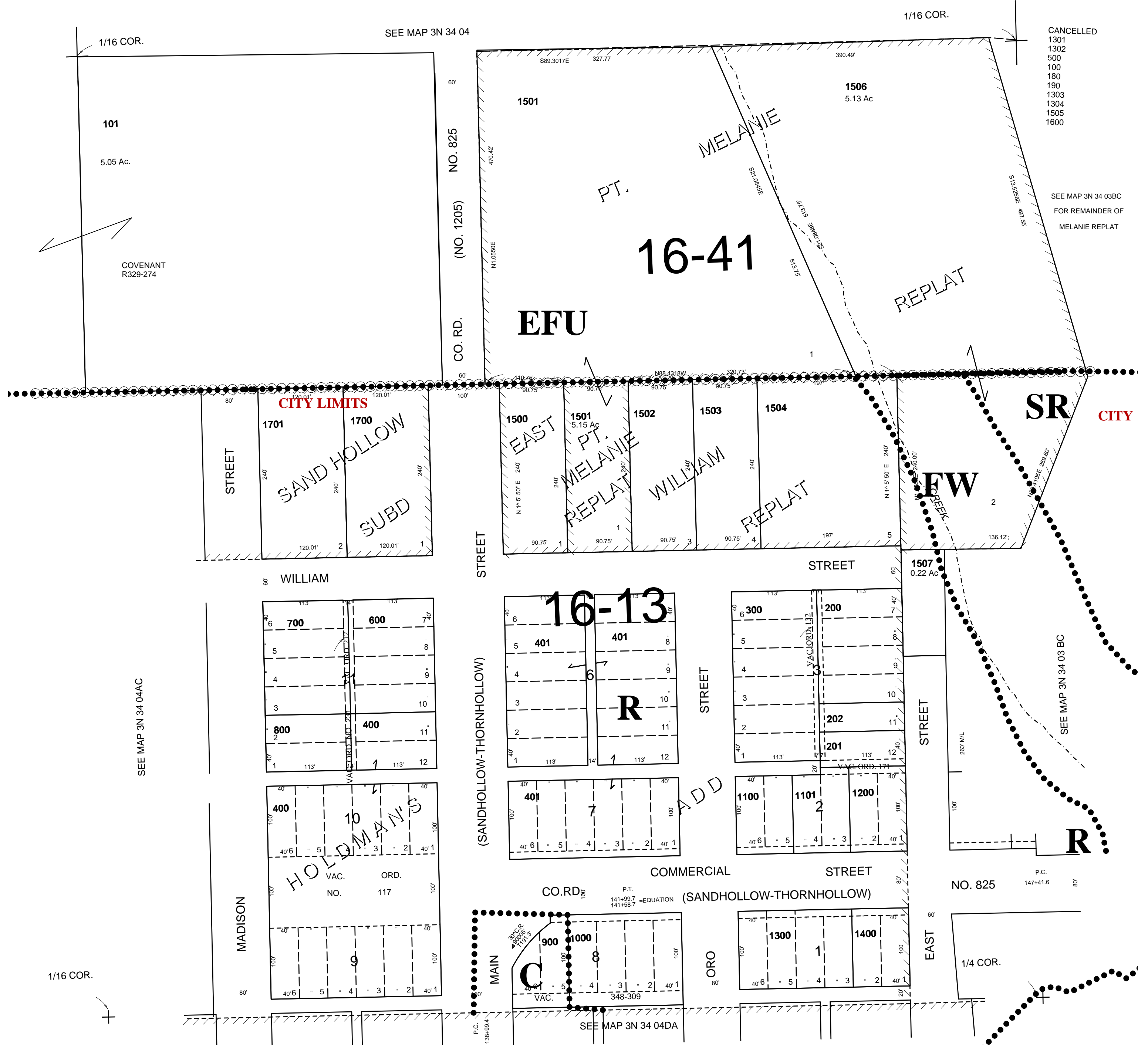
7/28/04

## 3N 34 04AD

CITY OF ADAMS

AERIAL PHOTO NO. 5P-169

### See FIRM for areas subject to flooding



## 3N 34 04AD