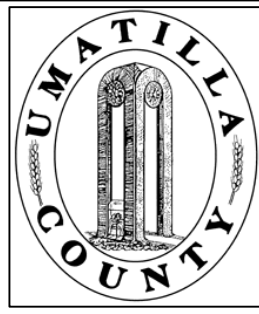


This map was prepared for Assessment purposes only.



NW1/4 SEC 16 T3N R29E WM UMATILLA COUNTY, OR

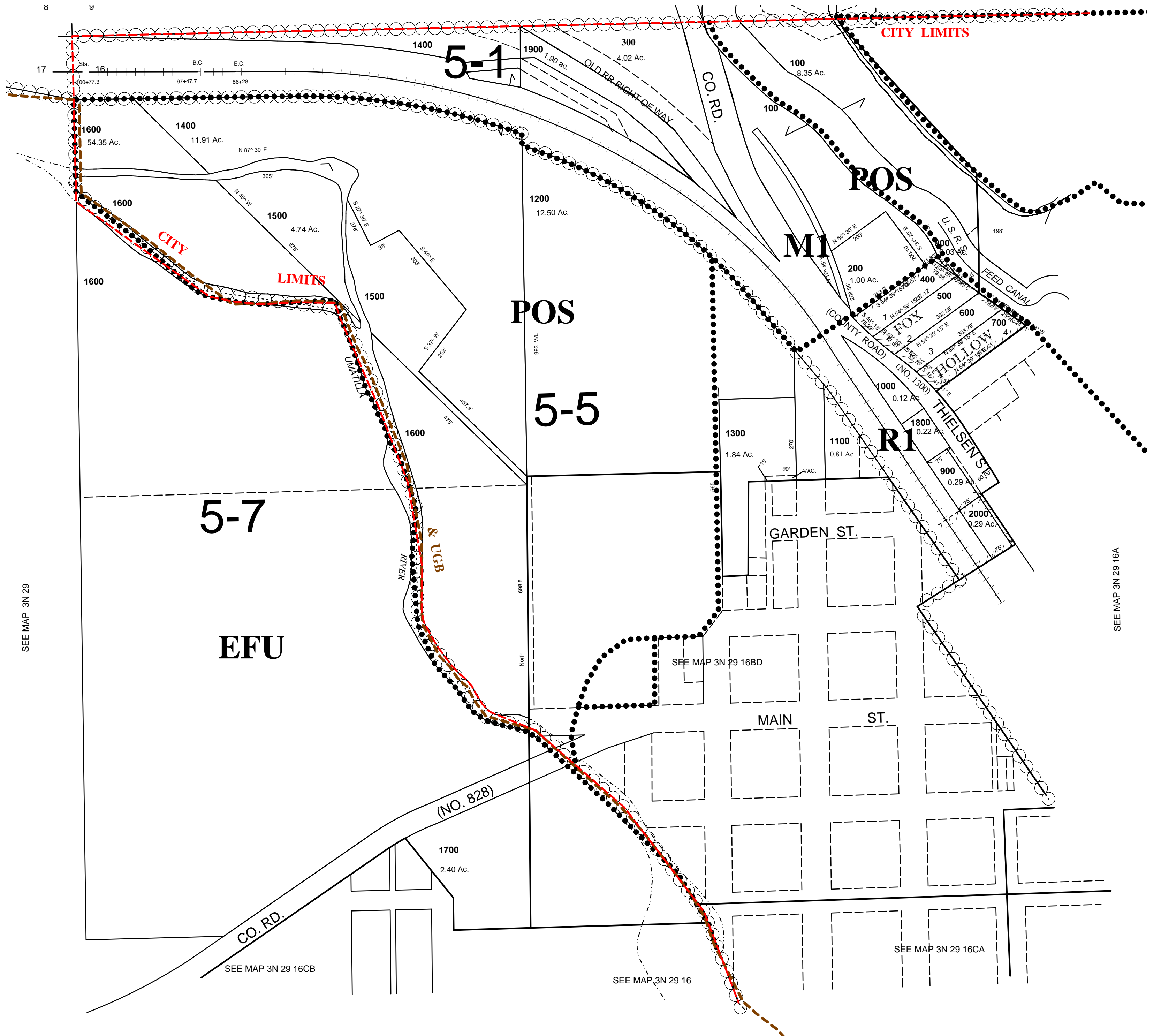
SCALE: 1" = 200"

3N2916B

CITY OF ECHO

See FEMA FIRM for areas subject to flooding
All in Stage Gulch Critical Ground Water Area

5/12/03



3N2916B