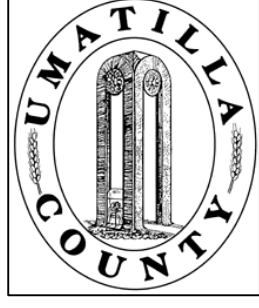


This map was prepared for Assessment & Taxation purposes only and was NOT prepared nor is it suitable for legal, engineering or surveying purposes.



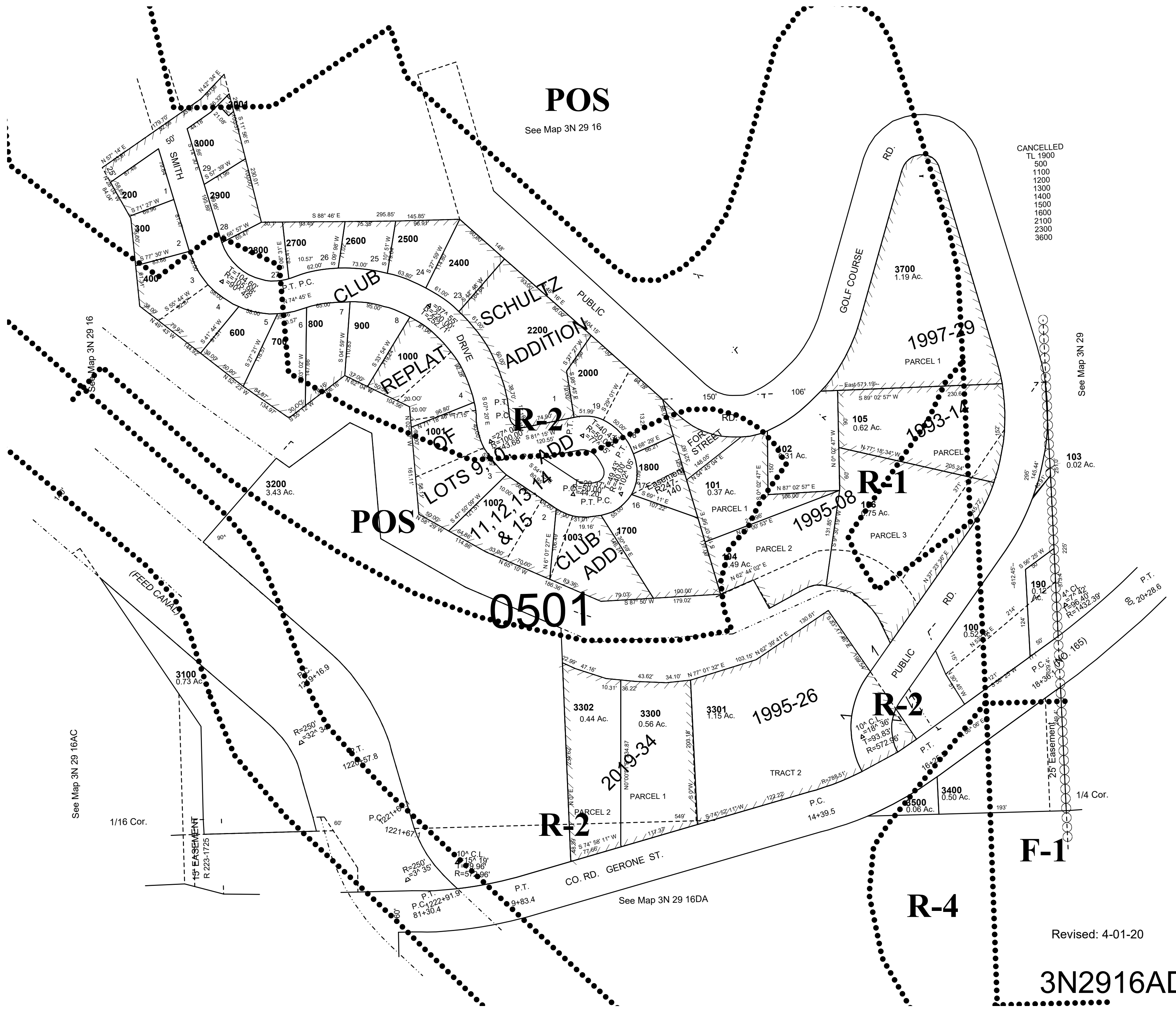
SE1/4 NE1/4 SEC 16 T 3N R 29E WM UMATILLA COUNTY, OR

SCALE: 1" = 100'

3N2916AD

AERIAL PHOTO NO. NZ-2P-111

CITY OF ECHO



- CANCELLED
- TL 1900
 - 500
 - 1100
 - 1200
 - 1300
 - 1400
 - 1500
 - 1600
 - 2100
 - 2300
 - 3600

See Map 3N 29
103
0.02 Ac.

See Map 3N 29
190
0.02 Ac.

Revised: 4-01-20
3N2916AD