

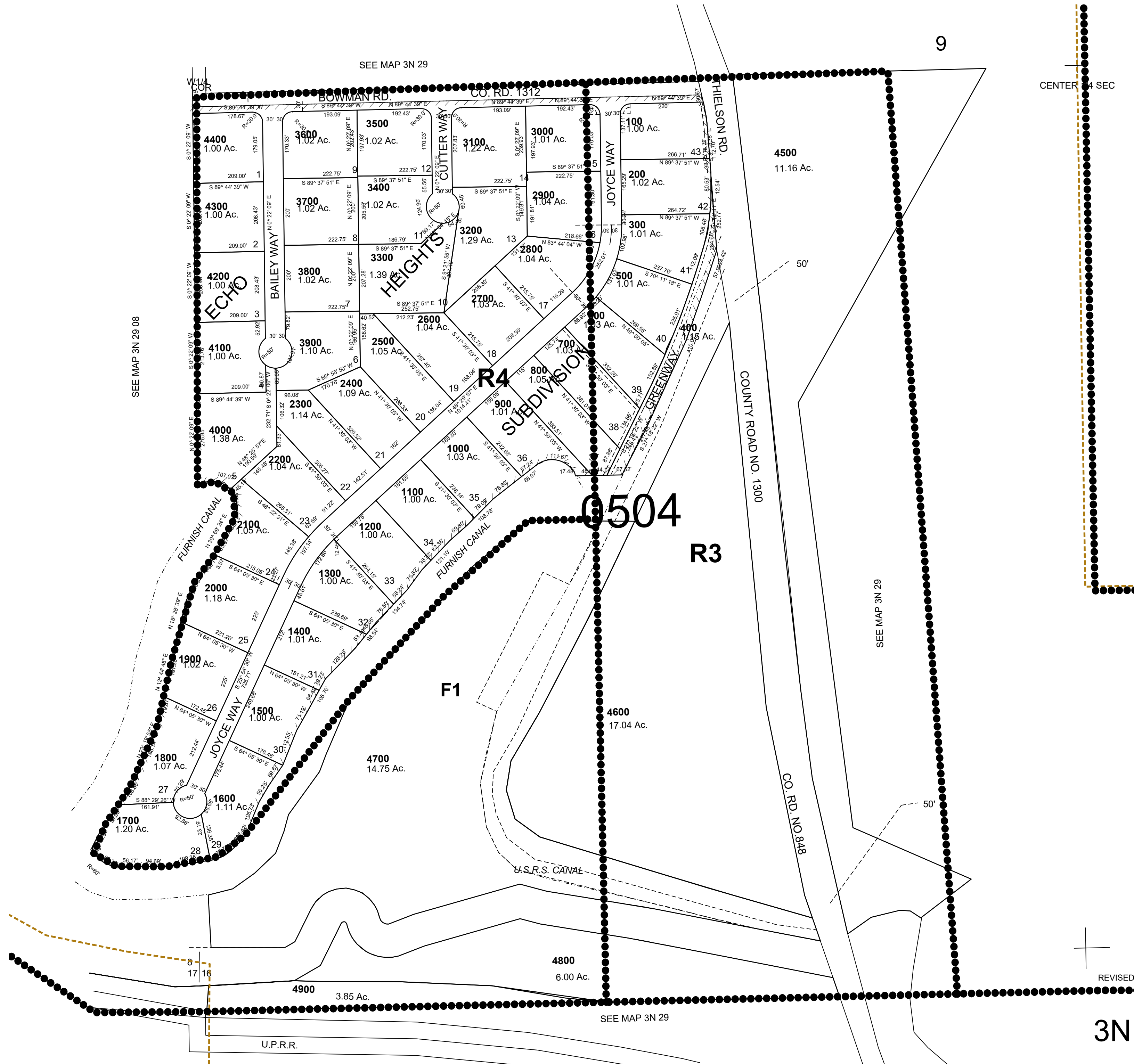
This map was prepared for Assessment & Taxation purposes only and was NOT prepared nor is it suitable for legal, engineering or surveying purposes.

# SW 1/4 SEC 9 T3N R29E WM UMATILLA COUNTY

SCALE 1"=200'

3N 29 09C

CITY OF ECHO UGB



REVISED: 03-31-2021

3N 29 09C