

This map was prepared for Assessment and Taxation purposes only and has NOT been prepared for legal, engineering or surveying purposes.

SW 1/4 SEC 31 T2N R33E WM UMATILLA COUNTY SCALE 1"=200'

10/09/20

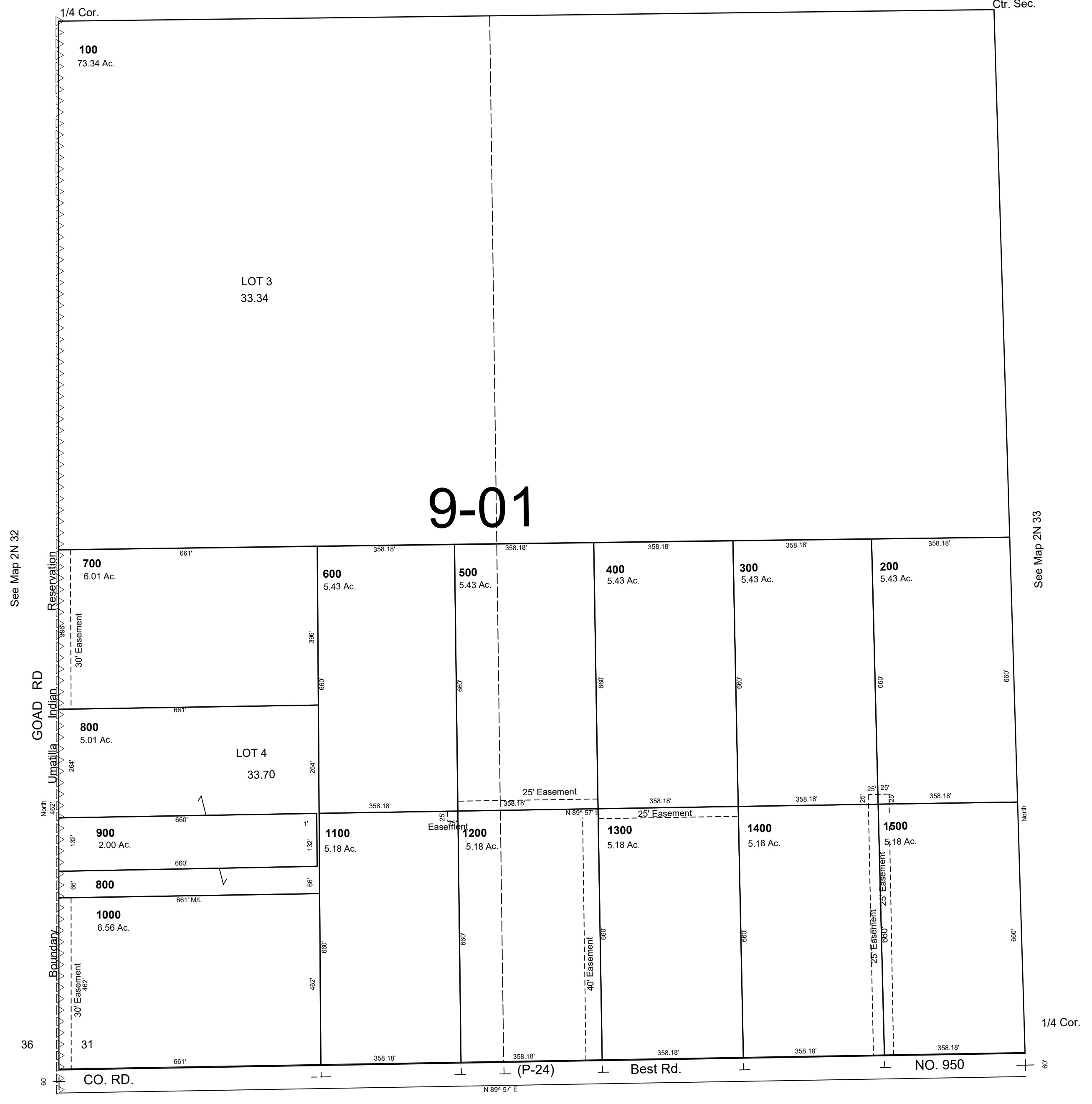
2N 33 31C

AERIAL PHOTO NO. NZ 4P-47
RESERVATION

1"=200'

Aerial Photo No. NZ-4P-47

See Map 2N 33



1 6

2N 33 31C